

---

TECHNICAL MANUAL

DIRECT SUPPORT AND GENERAL SUPPORT MAINTENANCE  
REPAIR PARTS AND SPECIAL TOOLS LISTS  
(INCLUDING DEPOT MAINTENANCE REPAIR PARTS AND SPECIAL TOOLS)  
FOR  
RADAR SYSTEM AN/FSQ-84  
(NSN 5840-00-110-5773)

---

HEADQUARTERS, DEPARTMENT OF THE ARMY

NOVEMBER 1978



**DIRECT SUPPORT AND GENERAL SUPPORT MAINTENANCE  
REPAIR PARTS AND SPECIAL TOOLS LISTS  
(INCLUDING DEPOT MAINTENANCE REPAIR PARTS AND SPECIAL TOOLS)  
FOR  
RADAR SYSTEM AN/FSQ-84  
(NSN 5840-00-110-5773)  
Current as of 18 April 1978**

**REPORTING OF ERRORS**

You can improve this manual by recommending improvements using DA Form 2028-2 located in the back of the manual. Simply tear out the self addressed form, fill it out as shown on the sample, fold it where shown, and drop it in the mail.

If there are no blank DA Form 2028-2 in the back of your manual, use the standard DA Form 2028 (Recommended Changes to Publications and Blank Forms) and forward to the Commander, US Army Communications and Electronics Materiel Readiness Command, ATTN: DRSEL-MA-Q, Fort Monmouth, New Jersey 07703.

In either case a reply will be furnished direct to you.

**Table of Contents**

SECTION		Page	Illus Figure
	I. Introduction.....	1	
	II. Repair parts list.....	5	
Group	00 Radar System AN/FSQ-84 .....	5	1
	01 Cable installation receiver-transmitter .....	9	2
	0101 Cable assembly, special purpose, electrical.....	13	3
	0102 Cable assembly, radio frequency .....	13	3
	0103 Cable assembly, radio frequency .....	13	3
	0104 Cable assembly, radio frequency .....	13	3
	0105 Cable assembly, radio frequency .....	13	3
	0106 Cable assembly, power, electrical.....	13	3
	0107 Cable assembly, radio frequency .....	14	3
	0108 Cable assembly, power, electrical.....	14	3
	0109 Cable assembly, power, electrical.....	14	3
	0110 Distribution Box J-2972/G.....	17	4
	02 Cable installation multiplexer/decoder.....	19	5
	0201 Cable assembly, special purpose, electrical.....	23	6
	0202 Cable assembly, power, electrical.....	23	6
	0203 Cable assembly, power, electrical.....	23	6
	0204 Cable assembly, power, electrical.....	23	6
	0205 Cable assembly, power, electrical.....	23	6
	0206 Cable assembly, radio frequency .....	23	6
	0207 Cable assembly, radio frequency .....	23	6
	0208 Cable assembly, radio frequency .....	23	6
	0209 Cable assembly, radio frequency .....	23	6
	03 Shelter cable installation.....	27	7
	0301 Cable assembly, power, electrical.....	31	8
	0302 Cable assembly, power, electrical.....	31	8
	0303 Cable assembly, radio frequency .....	31	8
	0304 Cable assembly, radio frequency .....	31	8
	0305 Cable assembly, radio frequency .....	31	8

\*This manual supersedes TM 11-5840-345-34P, 27 March 1972.

	Page	Illus Figure
Group		
	0306 Cable assembly, radio frequency ..... 31	8
	0307 Cable assembly, power, electrical ..... 31	8
	0308 Cable assembly, radio frequency ..... 31	8
	0309 Cable assembly, radio frequency ..... 31	8
	0310 Cable assembly, power, electrical ..... 31	8
04	Radar Set ANIFPN-40 (See TM 11-5840-293-20P and TM 11-5840-293-34P for parts)	
05	Antenna AS-1796/GPA-119 (See TM 11-5895-479-35P for parts)	
06	Antenna Pedestal AB-1158/GPA-119 (See TM 11-5895-479-35P for parts)	
07	Control, Remote Switching C-7014/TPX-44 (See TM 11-5840-309-35P for parts)	
08	Control, Remote Switching C-1271A/TPX-22 (See TM 11-5895-479-35P for parts)	
09	Multiplexer TD-991/G (See TM 11-5840-346-20P and TM 11-5840-346-34P for parts)	
10	Video Decoder KY-593/TPX-44 (See TM 11-5840-309-35P for parts)	
11	Shelter S-70/U Modified ..... 33	9, 10
12	Interconnecting Box J-2945/TPX-41 (See TM 11-5895-479-35P for parts)	
13	Pulse Modulator MD-638/TPX-41 (See TM 11-5895-479-35P for parts)	
14	Radio Receiver Transmitter RT-264D/UPX-6 (See TM 11-5895-245-35 for parts)	
15	Coder-Control KY-97CITPX (See TM 11-5895-201-24P for parts)	
16	Demultiplexer TD-992/G (See TM 11-5840-346-20P and TM 11-5840-346-34P for parts)	
17	Interference Blanker MX-8795/TPX-41 (See TM 11-5895-479-35P for parts)	
18	Fan installation exterior ..... 39	11
19	Box assembly, power distribution ..... 43	12
20	Shelf assembly, test equipment ..... 45	13
21	Junction box assembly, shelter ..... 47	14
22	Rack, electrical equipment A1-11240D ..... 49	15
23	Rack, electrical equipment A1-11439D ..... 53	16
SECTION		
III.	Special tools list (Not applicable)	
IV.	National stock number and part number index ..... 54	

**SECTION I  
INTRODUCTION**

---

**1. Scope**

This manual lists spares and repair parts; special tools; special test, measurement, and diagnostic equipment (TMDE), and other special support equipment required for performance of direct support and general support maintenance of the AN/FSQ-84. It authorizes the requisitioning and issue of spares and repair parts as indicated by the source and maintenance codes.

**2. General**

This Repair Parts and Special Tools List is divided into the following sections:

*a. Section II Repair Parts List.* A list of spares and repair parts authorized for use in the performance of maintenance. The list also includes parts which must be removed for replacement of the authorized parts. Parts lists are composed of functional groups in numeric sequence, with the parts in each group listed in figure and item number sequence.

*b. Section III. Special Tools List.* Not applicable.

*c. Section IV National Stock Number and Part Number Index.* A list, in National item identification number (NIIN) sequence, of all National stock numbers (NSN) appearing in the listings, followed by a list, in alphanumeric sequence, of all part numbers appearing in the listings. National stock numbers and part numbers are cross-referenced to each illustration figure and item number appearance.

**3. Explanation of Columns**

*a. Illustration.* This column is divided as follows:

(1) Figure number. Indicates the figure number of the illustration on which the item is shown.

(2) Item number. The number used to identify item called out in the illustration.

*b. Source, Maintenance, and Recoverability (SMR) Codes.*

(1) Source code. Source codes indicate the manner of acquiring support items for maintenance, repair, or overhaul of end items. Source codes are entered in the first and second positions of the Uniform SMR Code format as follows:

<i>Code</i>	<i>Definition</i>
PA--	Item procured and stocked for anticipated or known usage.

PD--	Support item, excluding support equipment, procured for initial issue or outfitting and stocked only for subsequent or additional initial issues or outfittings. Not subject to automatic replenishment.
------	--

XD--	A support item that is not stocked. When required, item will be procured through normal supply channels.
------	--

**NOTE**

Cannibalization or salvage may be used as a source of supply for any items source coded above except those coded XA and aircraft support items as restricted by AR 700-42.

(2) Maintenance code. Maintenance codes are assigned to indicate the levels of maintenance authorized to USE and REPAIR support items. The maintenance codes are entered in the third and fourth positions of the Uniform SMR Code format as follows:

(a) The maintenance code entered in the third position will indicate the lowest maintenance level authorized to remove, replace, and use the support item. The maintenance code entered in the third position will indicate one of the following levels of maintenance:

<i>Code</i>	<i>Application/Explanation</i>
O--	Support item is removed, replaced, used at the organizational level.
F--	Support item is removed, replaced, used at the direct support level.
D--	Support items that are removed, replaced, used at depot, mobile depot, specialized repair activity only.

(b) The maintenance code entered in the fourth position indicates whether the item is to be repaired and identifies the lowest maintenance level with the capability to perform complete repair (i.e., all authorized maintenance functions). This position will contain one of the following maintenance codes:

<i>Code</i>	<i>Application/Explanation</i>
O--	The lowest maintenance level capable of complete repair of the support item is the organizational level.
F--	The lowest maintenance level capable of complete repair of the support item is the direct support level.
D--	The lowest maintenance level capable of complete repair of the support item is the depot level.
Z--	Non-reparable. No repair is authorized.

(3) Recoverability code. Recoverability codes are assigned to support items to indicate the disposition action on unserviceable items. The recoverability code is entered in the fifth position of the Uniform SMR Code format as follows:

<i>Recoverability codes</i>	<i>Definition</i>
Z--	Non-reparable item. When unserviceable, condemn and dispose at the level indicated in position 3.

*Recoverability codes*

*Definition*

O--Reparable item. When uneconomically repairable, condemn and dispose at organizational level.

F--Reparable item. When uneconomically repairable, condemn and dispose at the direct support level.

D--Reparable item. When beyond lower level repair capability, return to depot. Condemnation and disposal not authorized below depot level.

c. *National Stock Number.* Indicates the National stock number assigned to the item and will be used for requisitioning purposes.

d. *Part Number.* Indicates the primary number used by the manufacturer (individual, company, firm, corporation, or Government activity), which controls the design and characteristics of the item by means of its engineering drawings, specifications, standards, and inspection requirements to identify an item or range of items.

**NOTE**

When a stock numbered item is requisitioned, the repair part received may have a different part number than the part being replaced.

e. *Federal Supply Code for Manufacturer (FSCM).* The FSCM is a 5-digit numeric code listed in SB 708-42 which is used to identify the manufacturer, distributor, or Government agency, etc.

f. *Description.* Indicates the Federal item name and, if required, a minimum description to identify the item.

g. *Unit of Measure (UIM).* Indicates the standard of the basic quantity of the listed item as used in performing the actual maintenance function. This measure is expressed by a two-character alphabetical abbreviation (e.g., ea., in, pr, etc.). When the unit of measure differs from the unit of issue, the lowest unit of issue that will satisfy the required units of measure will be requisitioned.

h. *Quantity Incorporated in Unit.* Indicates the quantity of the item used in the breakout shown on the illustration figure, which is prepared for a functional group, sub-functional group, or an assembly.

**4. Special Information**

The following publications pertain to the AN/FSQ-84 and its components:

TM 11-5840-293-12, Radar Set AN/FPN-40 (with IFF Capability)

TM 11-5840-293-20P, Radar Set AN/FPN-40

TM 11-5840-293-34P, Radar Set AN/FPN-40

TM 11-5840-293-35, Radar Set AN/FPN-40 (with IFF Capability)

TM 11-5840-309-35, Decoder, Video KY-593/TPX-44 and Control, Remote Switching C-7014/TPX-44

TM 11-5840-309-35P, Decoder, Video KY-593/TPX-44 and Control, Remote Switching C-7014/TPX-44

TM 11-5840-345-20, Radar System AN/FSQ-84

TM 11-5840-345-20P, Radar System AN/FSQ-84

TM 11-5840-345-34, Radar System AN/FSQ-84

TM 11-5840-346-20, Multiplexer TD-991/G and Demultiplexer TD-992/G

TM 11-5840-346-20P, Multiplex System for, AN/FPN-40

TM 11-5840-346-34P, Multiplex System for AN/FPN-40, (TD-991/G, TD-992/G)

TM 11-5840-346-35, Multiplexer TD-991/G and Demultiplexer TD-992/G

TM 11-5895-201-24P, Coder-Control, Interrogation Sets KY-97/TPX, KY-97A/TPX, KY-97B/TPX, KY-97C/TPX, and KY-592/TPX-44

TM 11-5895-201-35, Coder-Control, Interrogator Sets KY-97/TPX, KY-97A/TPX, KY-97B/TPX, KY-97C/TPX, and KY-592/TPX-44

TM 11-5895-245-35, Receiver-Transmitters, Radio RT-211A/TPX and RT-264D/UPX-6 and Receiver-Transmitter, Radar RT-820/TPX-44

TM 11-5895-479-12, Interrogator Set AN/TPX-41

TM 11-5895-479-35, Interrogator Set AN/TPX-41

TM 11-5895-479-35P, Interrogator Set AN/TPX-41

**5. How to Locate Repair Parts**

a. When National stock number or part number is unknown.

(1) *First.* Using the table of contents, determine the functional group within which the item belongs. This is necessary since illustrations are prepared for functional groups and listings are divided into the same groups.

(2) *Second.* Find the illustration covering the functional group to which the item belongs.

(3) *Third.* Identify the item on the illustration and note the illustration figure and item number of the item.

(4) *Fourth.* Using the Repair Parts Listing, find the figure and item number noted on the illustration.

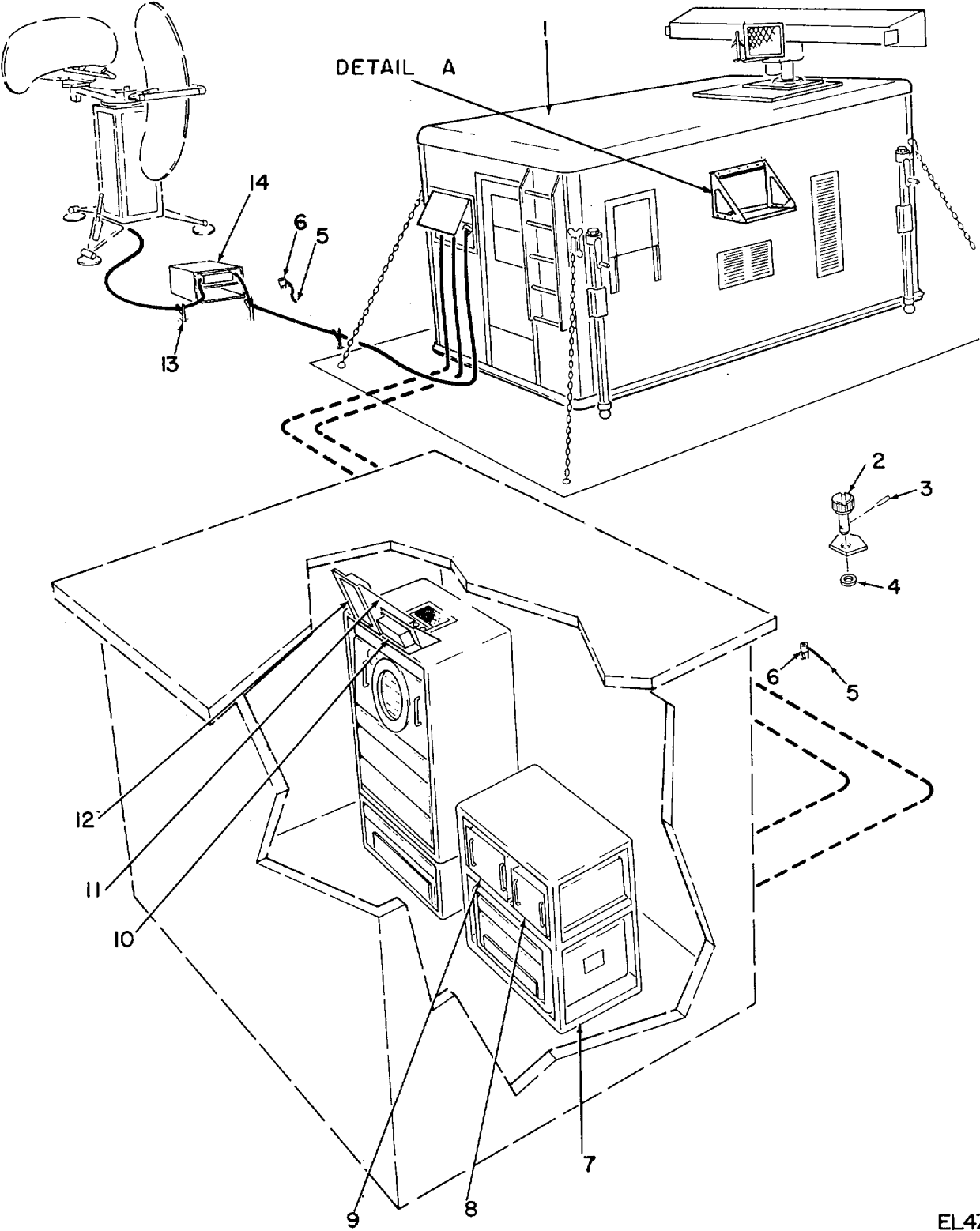
b. When National stock number or part number is known.

(1) *First.* Using the Index of National Stock Numbers and Part Numbers, find the pertinent National stock number or part number. This index is in NIIN sequence followed by a list of part numbers in alphanumeric sequence, cross-referenced to the illustration figure number and item number.

(2) *Second.* After finding the figure and item number, locate the figure and item number in the repair parts list.

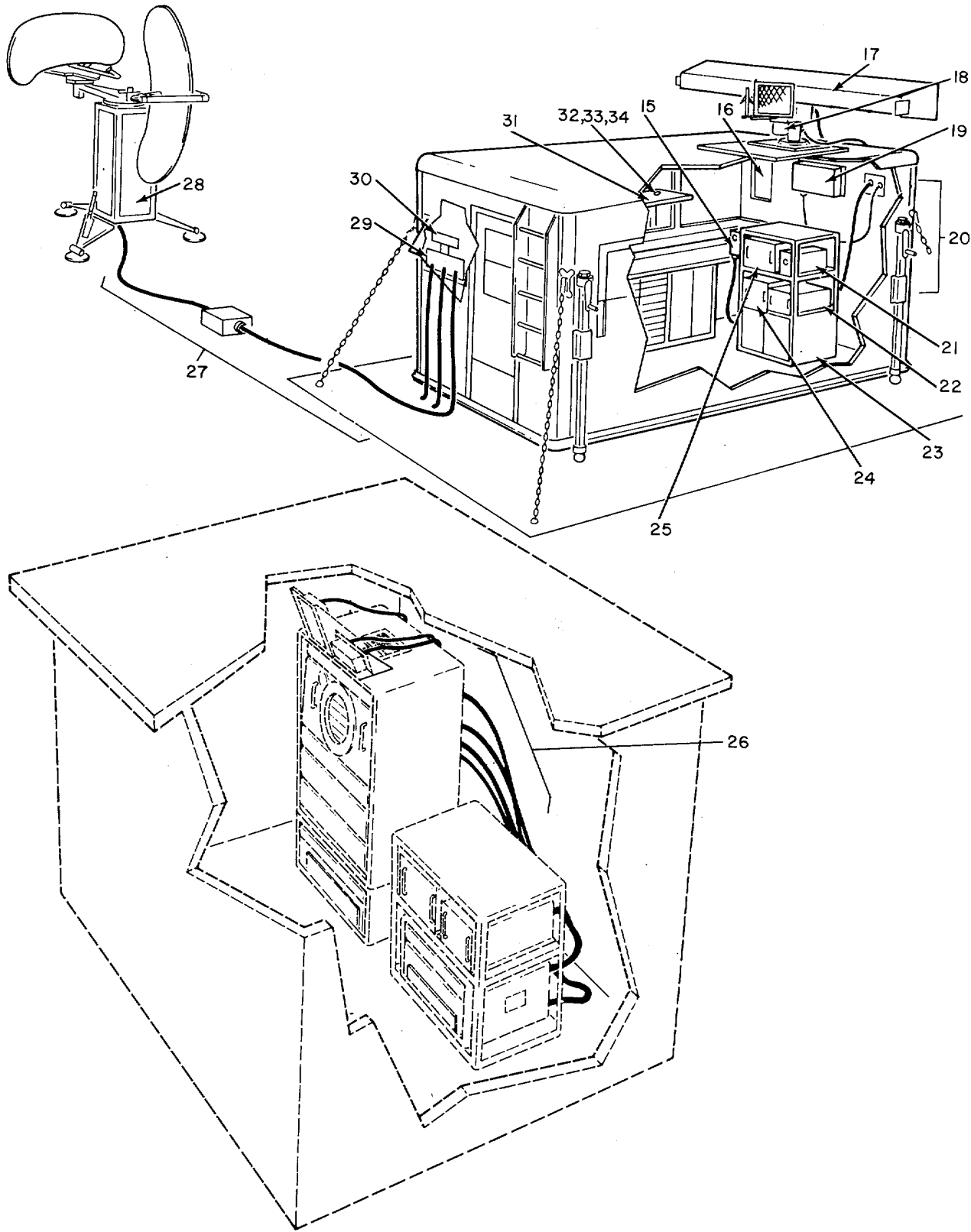
**6. Abbreviations**

Not applicable.



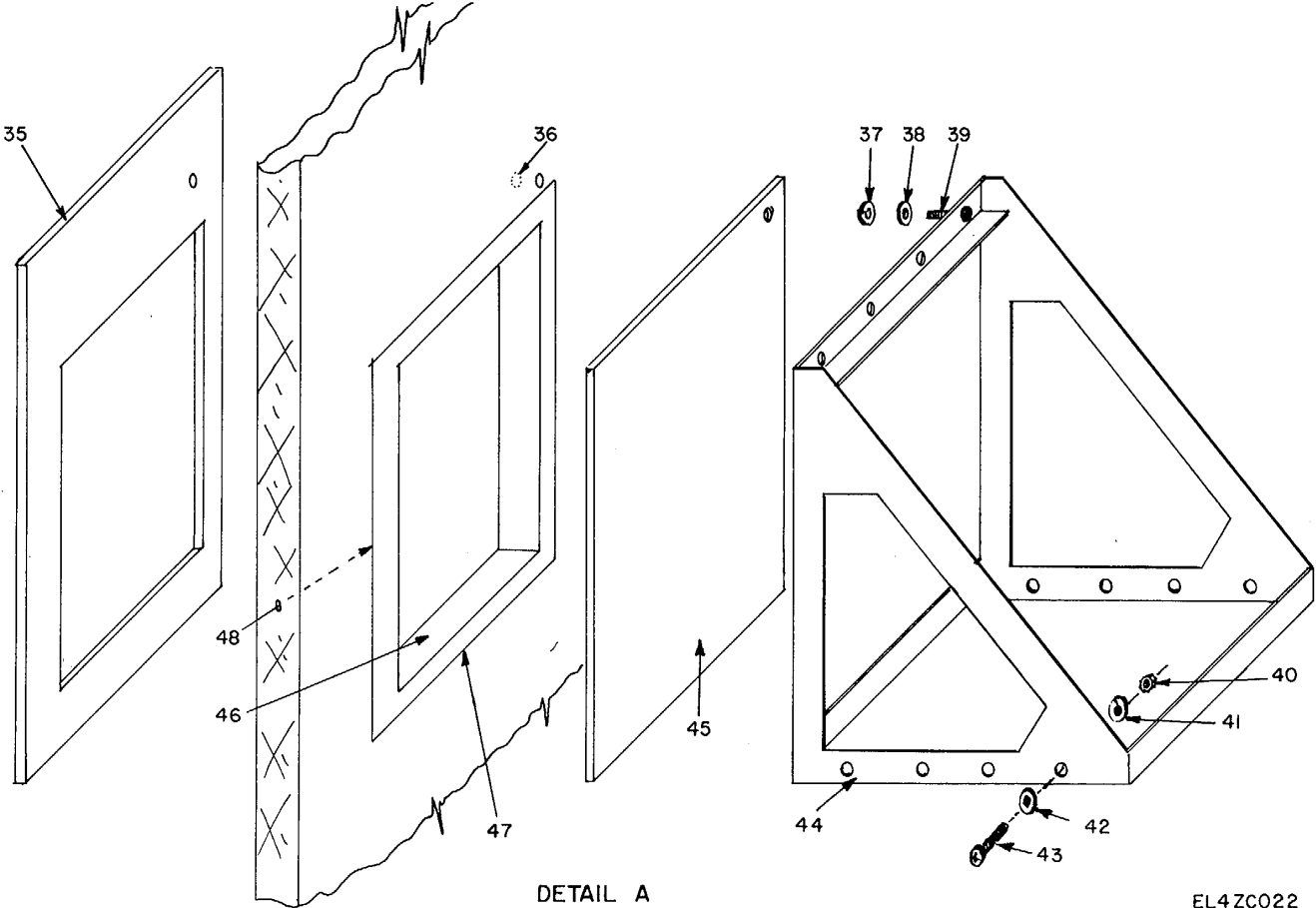
EL4ZCO01

Figure 1. Radar System AN/FSQ984 (Sheet 1 of 3).



EL4ZC002

Figure 1. Radar System AN/FSQ,84 (Sheet 2 of 3).



EL4ZC022

Figure 1. Radar System AN/FSQ-84 (Sheet 3 of 3).



SECTION II

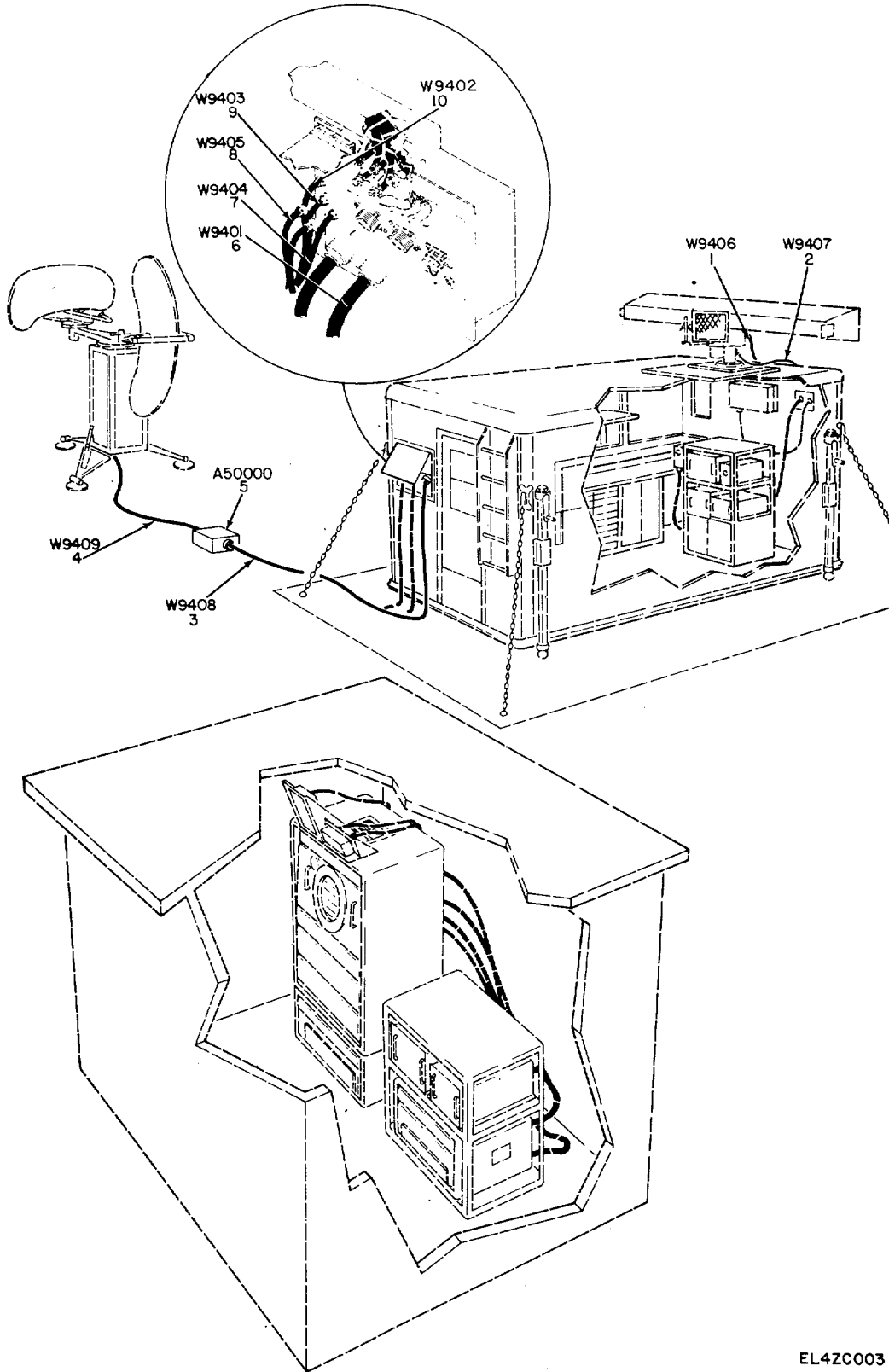
TM 11-5840-345-34P

(1) ILLUSTRATION		(2)	(3)	(4)	(5)	(6) DESCRIPTION	(7)	(8)
(a) FIG NO.	(b) ITEM NO.	SMR CODE	NATIONAL STOCK NUMBER	PART NUMBER	FSCM	USABLE ON CODE	U/M	QTY INC IN UNIT
						GROUP 00 RADAR SYSTEM AN/FSQ-84		
1	1	PAOFD	5410-00-141-7619	S-70/U	80058	SHELTER, ELECTRIC .....	EA	1
1	2	XDFZZ		01-113418	14850	STUD, LOCKING.....	EA	3
1	3	PAFZZ	5315-00-058-9698	MS16562	96906	PIN, SPRING.....	EA	3
1	4	PAFZZ	5310-00-225-5328	MS15795-841	96906	WASHER, FLAT .....	EA	3
1	5	PAFZZ	4940-00-752-2525	666147-691	14100	STRAP, GROUND.....	EA	2
1	6	PAFZZ	5975-00-224-5260	MX-148/G	80058	ROD, GROUND.....	EA	2
1	7	XDFFD		AL-114390	14850	RACK, ELEC EQPT.....	EA	1
1	8	PDODD	5840-00-944-1203	KY-593/TPX-44	80058	DECODER, VIDEO.....	EA	1
1	9	PDODD	5840-00-406-3438	TD-991/G	24930	MULTIPLEXER.....	EA	1
	10	XDODD		C-1271A/TPX-22	80058	CONTROL SW REMOTE .....	EA	1
1	11	XDOFF		A1-11342D	14850	PANEL ASSEMBLY.....	EA	1
1	12	PDODD		C-7014/TPX-44	80058	CONTROL SW REMOTE .....	EA	1
1	13	XDFZZ		A1-11542D	14850	CABLE, CARRIER.....	EA	10
1	14	XDFZZ		A1-11543D	14850	JUNCTION BOX.....	EA	1
1	15	PDODD	5895-00-491-3496	J-2945/TPX-41	80058	INTERCONNECTING.....	EA	1
1	16	XDFFD		SCD539982	80063	FAN INSTL, EXTERIOR.....	EA	1
1	17	PDODD	5985-00-909-5350	AS-1796/GPA-119	80058	ANTENNA .....	EA	1
1	18	PDODD	5985-00-413-4415	AB-1158/GRA-119	80058	ANTENNA PEDESTAL.....	EA	1
1	19	PDODD	5895-00-903-0649	MD-638/TPX-41	80058	MODULADOR, PULSE.....	EA	1
1	20	XDOFF		170102	24930	SHELTER CABLE INSTL .....	EA	1
1	21	XDODD		KY-97C/TPX	80058	CODER-CONTROL.....	EA	1
1	22	PDODD	5895-00-402-5301	MX-8795/TPX-41	80058	BLANKER, INTERFER .....	EA	1
1	23	XDFFD		A1-11240D	14850	RACK, ELEC EQPT.....	EA	1
1	24	PDODD	5805-00-402-5274	TD-992/G	24930	DEMULTIPLEXER.....	EA	1
1	25	XDODD		RT-264D/UPX-6	80058	RADIORT .....	EA	1
1	26	XDOFF		181502-1	24930	CABLE INSTL.....	EA	1
1	27	XDOFF		170106	24930	CABLE INSTL RT.....	EA	1
1	28	PDODD	5840-00-752-0603	AN/FPN-40	24930	RADAR SET .....	EA	1
1	29	XDFFD		SCD539708	80063	JUNCTION BOX ASSY .....	EA	1
1	30	XDFFD		A1-11191D	14850	BOX ASSY, PWRD DISTR.....	EA	1
1	31	XDODD		A1-111620D	14850	SHELF ASSY, TST.....	EA	1
1	32	PAOZZ	5305-00-225-9081	MS90725-36	96906	SCREW CAP HEXAGO .....	EA	6
1	33	PAOZZ	5310-00-081-4219	MS27183-12	96906	WASHER, FLAT .....	EA	6
1	34	PAOZZ	5310-00-407-9566	MS35338-45	96906	WASHER, LOCK .....	EA	6
1	35	XDFZZ		A1-14975-4	14850	COVER MASK.....	EA	1
1	36	XDFZZ		SS378370	51581	RIVNUT .....	EA	18
1	37	PAFZZ	5310-00-984-7042	MS35338-141	96906	WASHER, LOCK .....	EA	18
1	38	PAFZZ	5310-00-773-7618	MS15795-814	96906	WASHER.....	EA	18
1	39	PAFZZ	5305-00-717-5467	MS35307-362	96906	SCREW .....	EA	18
					5			

SECTIONII

TM11-5840-345-34P

(1) ILLUSTRATION		(2)	(3)	(4)	(5)	(6) DESCRIPTION	(7)	(8)
(a) FIG NO	(b) ITEM NO	SMR CODE	NATIONAL STOCK NUMBER	PART NUMBER	FSCM	USABLEONCODE	U/M	QTY INC IN UNIT
1	40	PAFZZ	5310-00-929-1807	MS51922-2	96906	NUT .....	EA	14
1	41	PAFZZ	5310-00-933-8121	MS35338-139	96906	WASHER, LOCK .....	EA	14
1	42	PAFZZ	5310-00-582-5677	MS15795-810	96906	WASHER .....	EA	14
1	43	PAFZZ	5305-00-702-4523	MS35307-306	96906	SCREW .....	EA	14
1	44	XDFZZ		A1-14975-5	14850	BRACKET, BOTTOM.....	EA	1
1	45	XDFZZ		A1-14975-3	14850	COVER .....	EA	1
1	46	XDFZZ		A1-14975-2	14850	FRAME, INSIDE .....	EA	1
1	47	XDFZZ		A1-14975-1	14850	FRAME, OUTSIDE .....	EA	1
1	48	XDFZZ		MILR-46089	96906	GASKET .....	EA	10
					<b>6</b>			



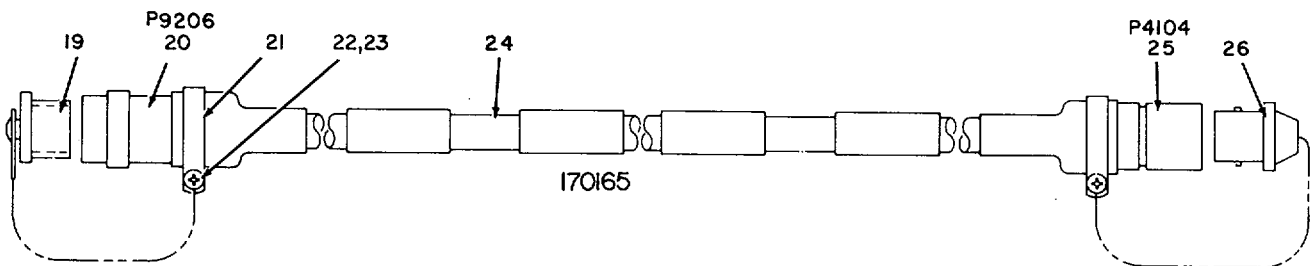
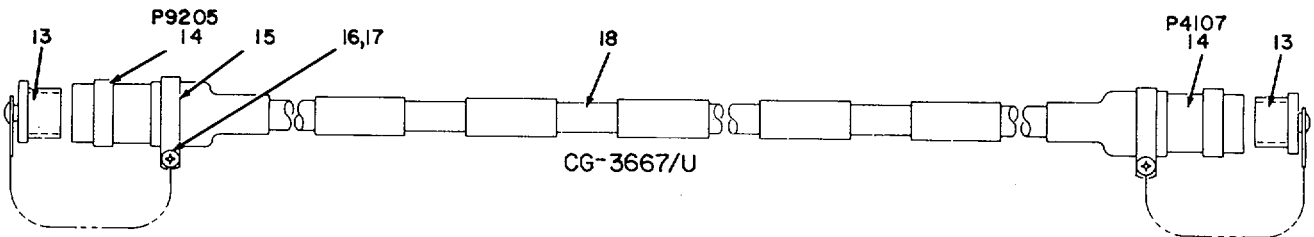
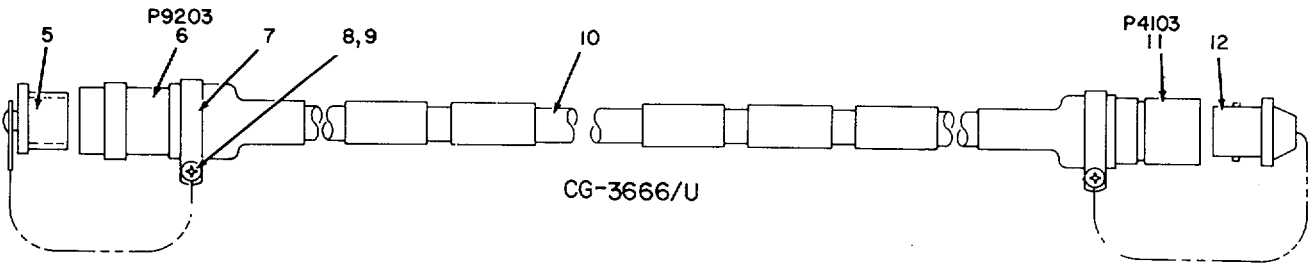
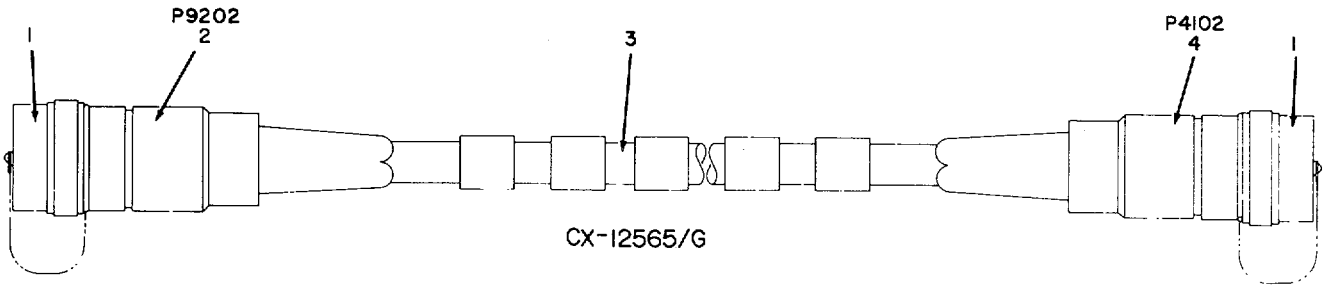
EL4ZC003

Figure 2. Cable Installation Receiver-Transmitter.

SECTIONII

TM11-5840-345-34P

(1) ILLUSTRATION		(2)	(3)	(4)	(5)	(6) DESCRIPTION	(7)	(8)
(a) FIG NO	(b) ITEM NO	SMR CODE	NATIONAL STOCK NUMBER	PART NUMBER	FSCM	USABLEONCODE	U/M	QTY INC IN UNIT
						GROUP 01CABLE INSTALLATION RECEIVER- TRANSMITTER		
2	1	PAOFF	5995-00-185-0362	170176	24930	CABLE ASSEMBLY, RF.....	EA	1
2	2	PAOFF	5995-0D-185-0365	170177	24930	CABLE ASSEMBLY, RF.....	EA	1
2	3	PAOFF	5995-00-470-4345	CX12566G50FT	80058	CABLE ASSEMBLY.....	EA	11
2	4	PAOFF	5995--00-463-4068	CX12567G10FT	80058	CABLE ASSEMBLY.....	EA	1
2	5	PAOFF	6110-00-409-8125	J-2972/G	80058	DISTRIBUTION BOX.....	EA	1
2	6	PAOFF	5995-00-470-4344	CX12565G50FT	80058	CABLE ASSEMBLY.....	EA	1
2	7	PAOFF	5995-00-185-0386	170165	24930	CABLE ASSEMBLY.....	EA	1
2	8	PAOFF	5995-00-185-0360	170166	24930	CABLE ASSEMBLY.....	EA	1
2	9	PAOFF	5995-00-480-1290	CG3667U50FT	80058	CABLE ASSEMBLY.....	EA	1
2	10	PAOFF	5995-00-480-L291	CG3666U50FT	80058	CABLE ASSEMBLY.....	EA	1
					<b>9</b>			



EL4ZC004

Figure 3. Cable Assemblies, RF and Power (Sheet 1 of 3).

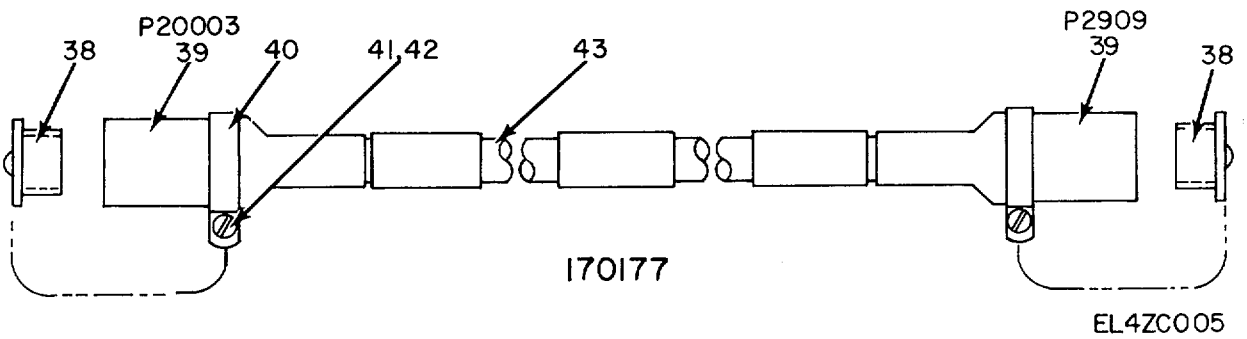
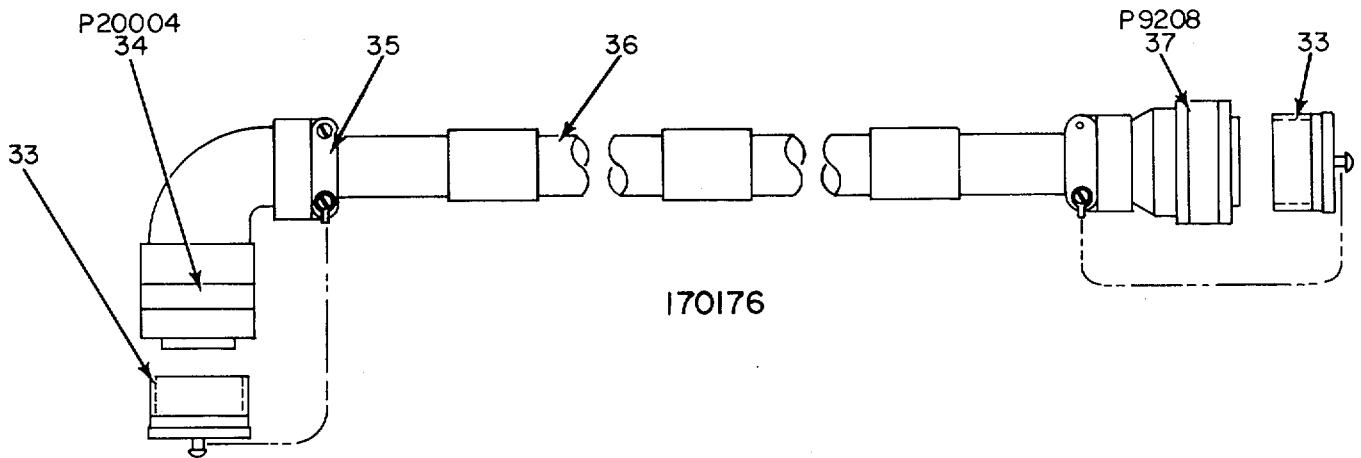
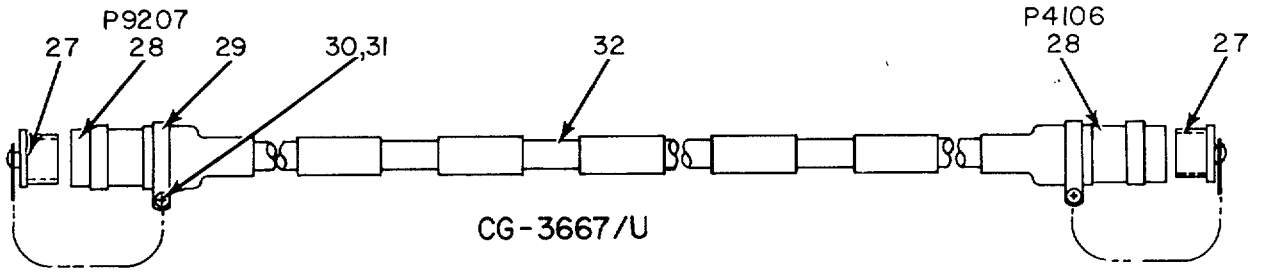


Figure 3. Cable Assemblies, RF and Power (Sheet 2 of 3).

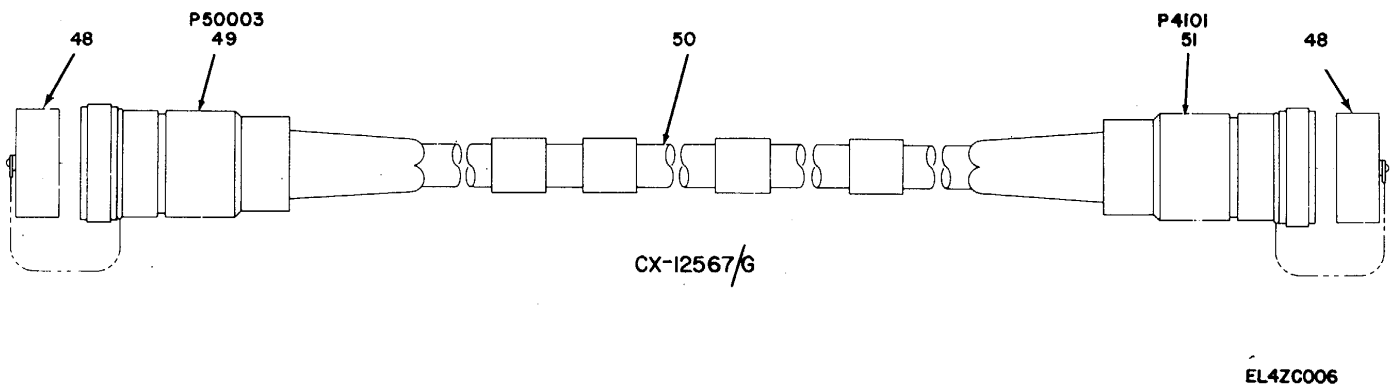
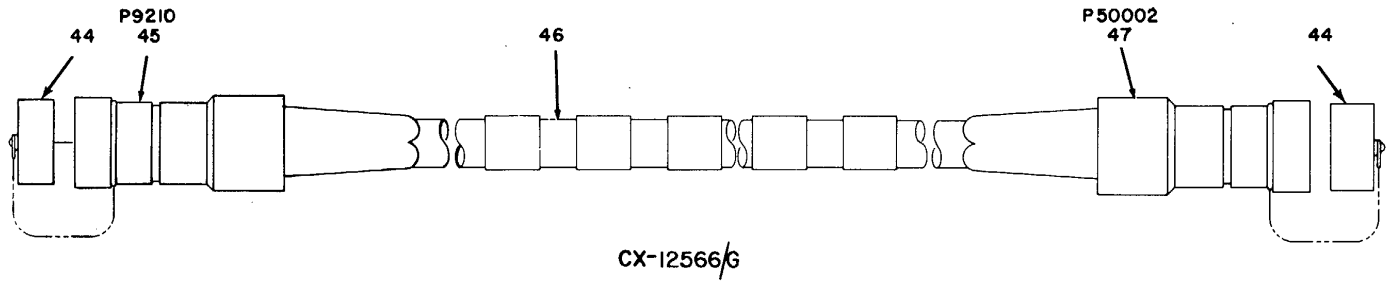


Figure 3. Cable Assemblies, RF and Power (Sheet 3 of 3).

## SECTION II

TM11-5840-345-34P

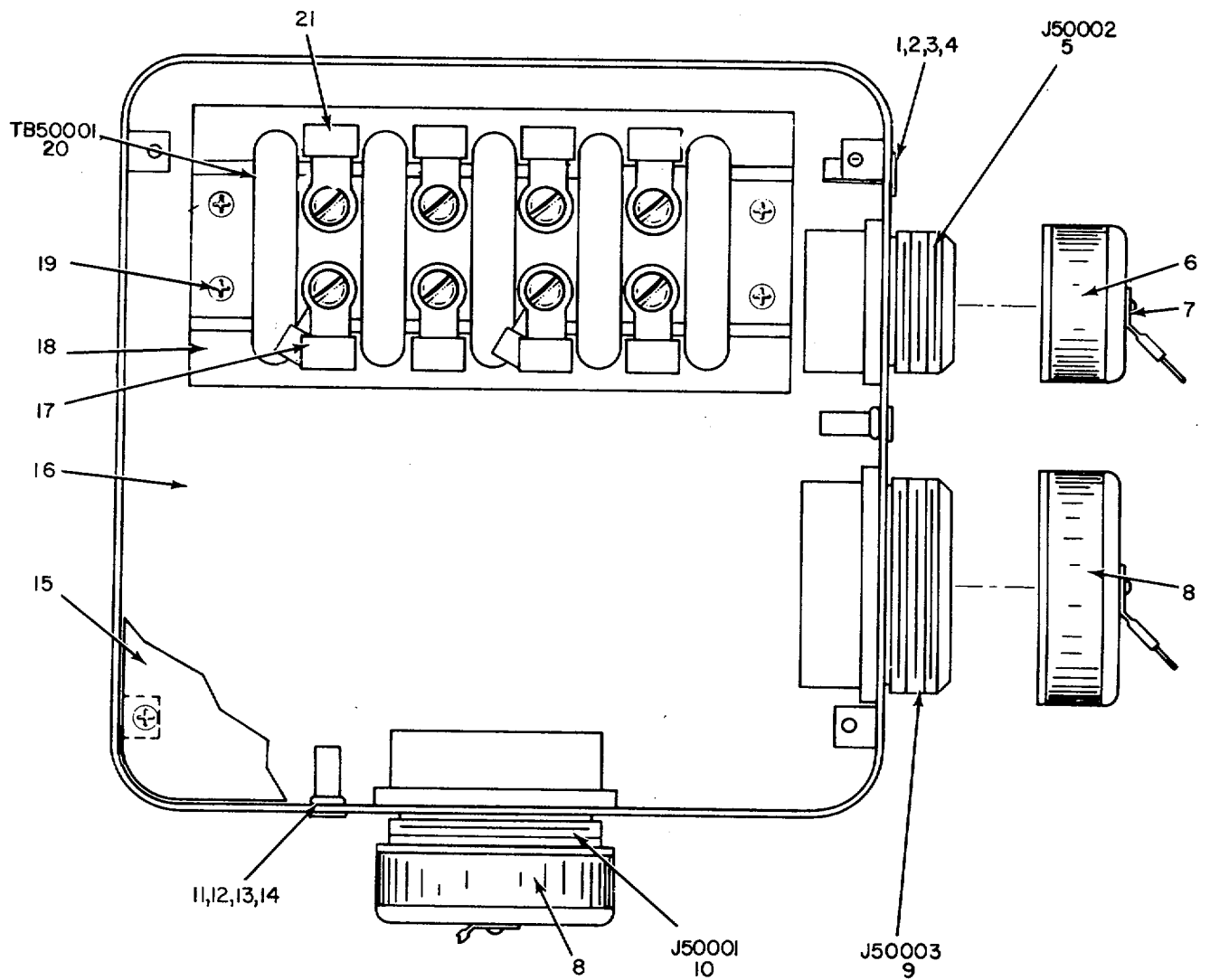
(1) ILLUSTRATION		(2)	(3)	(4)	(5)	(6) DESCRIPTION	(7)	(8)
(a) FIG NO	(b) ITEM NO	SMR CODE	NATIONAL STOCK NUMBER	PART NUMBER	FSCM	USABLE ON CODE	U/M	QTY INC IN UNIT
						GROUP 0101 CABLE ASSEMBLY, SPECIAL PURPOSE, ELECTRICAL		
3	1	PAFZZ	5935-00-243-8622	G1106-51E5-84G	06324	COVER, ELECTRICAL.....	EA	2
3	2	PAFZZ	5935-00-243-8610	G0886X	06324	CONNECTOR, PLUG.....	EA	1
3	3	XDFZZ		70766	24930	CABLE, SPECIAL PURPOSE ELEC.....	FT	50
3	4	PAFZZ	5935-00-243-8609	G0886	06324	CONNECTOR, PLUG.....	EA	1
						GROUP 0102 CABLE ASSEMBLY, RADIO FREQUENCY		
3	5	PAFZZ	5935-00-426-8406	G350264S1	24930	COVER, ELECTRICAL.....	EA	1
3	6	PAFZZ	5935-00-928-3127	UG11858U	80058	CONNECTOR, PLUG.....	EA	1
3	7	PAFZZ	5340-00-482-9503	TA553TSS12	84971	CLAMP, LOOP.....	EA	2
3	8	PAFZZ	5310-00-982-4999	MS21044C04	96906	NUT, SELF-LOCKING.....	EA	2
3	9	PAFZZ	5305-00-054-5649	MS51957-15	96906	SCREW MACHINE.....	EA	2
3	10	PAFZZ	6145-00-660-8825	RG216U	81349	CABLE, RF.....	FT	50
3	11	PAFZZ	5935-00-836-8419	UG573AU	80058	CONNECTOR, PLUG.....	EA	1
3	12	PAFZZ	5935-00-089-4442	M39012-25-003	81349	COVER, ELEC, CONN.....	EA	1
						GROUP 0103 CABLE ASSEMBLY, RADIO FREQUENCY		
3	13	PAFZZ	5935-00-426-8406	G35026451	24930	COVER, ELECTRICAL.....	EA	2
3	14	PAFZZ	5935-00-928-3127	UG1185BU	80058	CONNECTOR, PLUG.....	EA	2
3	15	PAFZZ	5340-00-482-9503	TA553TSS12	84971	CLAMP, LOOP.....	EA	2
3	16	PAFZZ	5310-00-982-4999	MS21044C04	96906	NUT, SELF-LOCKING.....	EA	2
3	17	PAFZZ	5305-00-054-5649	MS51957-15	96906	SCREW, MACHINE.....	EA	2
3	18	PAFZZ	6145-00-660-8825	RG216U	81349	CABLE, RF.....	FT	50
						GROUP 0104 CABLE ASSEMBLY, RADIO FREQUENCY		
3	19	PAFZZ	5935-00-426-8406	G350264S1	24930	COVER, ELECTRICAL.....	EA	1
3	20	PAFZZ	5935-00-928-3127	UG1185BU	80058	CONNECTOR, PLUG.....	EA	1
3	21	PAFZZ	5340-00-482-9503	TA553TSS12	84971	CLAMP, LOOP.....	EA	2
3	22	PAFZZ	5305-00-054-5649	MS51957-15	96906	SCREW, MACHINE.....	EA	2
3	23	PAFZZ	5310-00-982-4999	MS21044C04	96906	NUT, SELF-LOCKING.....	EA	2
3	24	PAFZZ	6145-00-660-8825	RG216U	81349	CABLE, RF.....	FT	50
3	25	PAFZZ	5935-00-838-8419	UG573AU	80058	CONNECTOR, PLUG.....	EA	1
3	26	PAFZZ	5935-00-089-4442	M39012-25-0003	81349	COVER, ELECTRICAL.....	EA	1
						GROUP 0105 CABLE ASSEMBLY, RADIO FREQUENCY		
3	27	PAFZZ	5935-00-426-8406	G35026451	24930	COVER, ELECTRICAL.....	EA	2
3	28	PAFZZ	5935-00-928-3127	UG1185BU	80058	CONNECTOR, PLUG.....	EA	2
3	29	PAFZZ	5340-00-482-9503	TA553TSS12	84971	CLAMP, LOOP.....	EA	2
3	30	PAFZZ	5305-00-054-5649	MS51957-15	96906	SCREW, MACHINE.....	EA	2
3	31	PAFZZ	5310-00-982-4999	MS21044C04	96906	NUT, SELF-LOCKING.....	EA	2
3	32	PAFZZ	6145-00-660-8825	RG216U	81349	CABLE, RF.....	FT	50
						GROUP 0106 CABLE ASSEMBLY, POWER, ELECTRICAL		
3	33	PAFZZ	5935-00-660-5454	MS25042-22C	96906	COVER, ELECTRICAL.....	EA	2
					<b>13</b>			



## SECTION II

TM11-5840-345-34P

(1) ILLUSTRATION		(2)	(3)	(4)	(5)	(6) DESCRIPTION	(7)	(8)
(a) FIG NO	(b) ITEM NO	SMR CODE	NATIONAL STOCK NUMBER	PART NUMBER	FSCM	USABLE ON CODE	U/M	QTY INC IN UNIT
3	34	PAFZZ	5935-00-J80-5847	MS3108R22-19S	96906	CONNECTOR, PLUG, ELEC .....	EA	1
3	35	PAFZZ	5935-00-223-0572	MS3051-1SA	96906	ADAPTER, CABLE CL .....	EA	2
3	36	XDFZZ		C0-14MGF4-16-07 30	81349	CABLE, POWER ELEC .....	FT	8
3	37	PAFZZ	5935-00-256-8542	MS3106F22-19P	96906	CONNECTOR, PLUG..... GROUP 0107 CABLE ASSEMBLY, RADIO FREQUENCY	EA	1
3	38	PAFZZ	5935-00426-8406	G35026451	24930	COVER, ELECTRICAL.....	EA	2
3	39	PAFZZ	5935-00-92d-3127	UG11B5BU	80058	CONNECTOR, PLUG.....	EA	2
3	40	PAFZZ	5340-00-482-9503	TA553TSS12	84971	CLAMP, LOOP .....	EA	2
3	4L	PAEZZ	5305-00-054-5649	MS5157-15	96906	SCREW, MACHINE.....	EA	2
3	42	PAFZZ	5310-00-982-4999	MS21044C04	96906	NUT, SELF-LOCKING .....	EA	2
3	43	PAFZZ	6145-00-660-8054	RG214AU	80058	CABLE, RADIO FREQ..... GROUP 0108 CABLE ASSEMBLY, POWER, ELECTRICAL	EA	6
3	44	PAFZZ	5935-00-236-7909	G1106-40E5-72G	06324	COVER, ELECTRICAL.....	EA	2
3	45	PAFZZ	5935-00-236-7908	G0930JS	06324	CONNECTOR, PLUG.....	EA	1
3	46	XDFZZ		C0-02HLF2-4-1080	81349	CABLE, POWER, ELEC.....	FT	50
3	47	PAFZZ	5935-00-242-2241	G0930P	06324	CONNECTOR, PLUG..... GROUP 0109 CABLE ASSEMBLY, POWER, ELECTRICAL	EA	1
3	48	PAFZZ	5535-00-243-8622	G1106-51E5-84G	06324	COVER, ELECTRICAL.....	EA	2
3	49	PAFZZ	5935-00-243-8620	G3935P	06324	CONNECTOR, PLUG.....	EA	1
3	50	XDFZZ		C0-04HLF4-4-1325	81349	CABLE, POWER, ELEC.....	FT	10
3	51	PAFZZ	5935-00-243-8619	G0935	06324	CONNECTOR, PLUG.....	EA	1
					<b>14</b>			



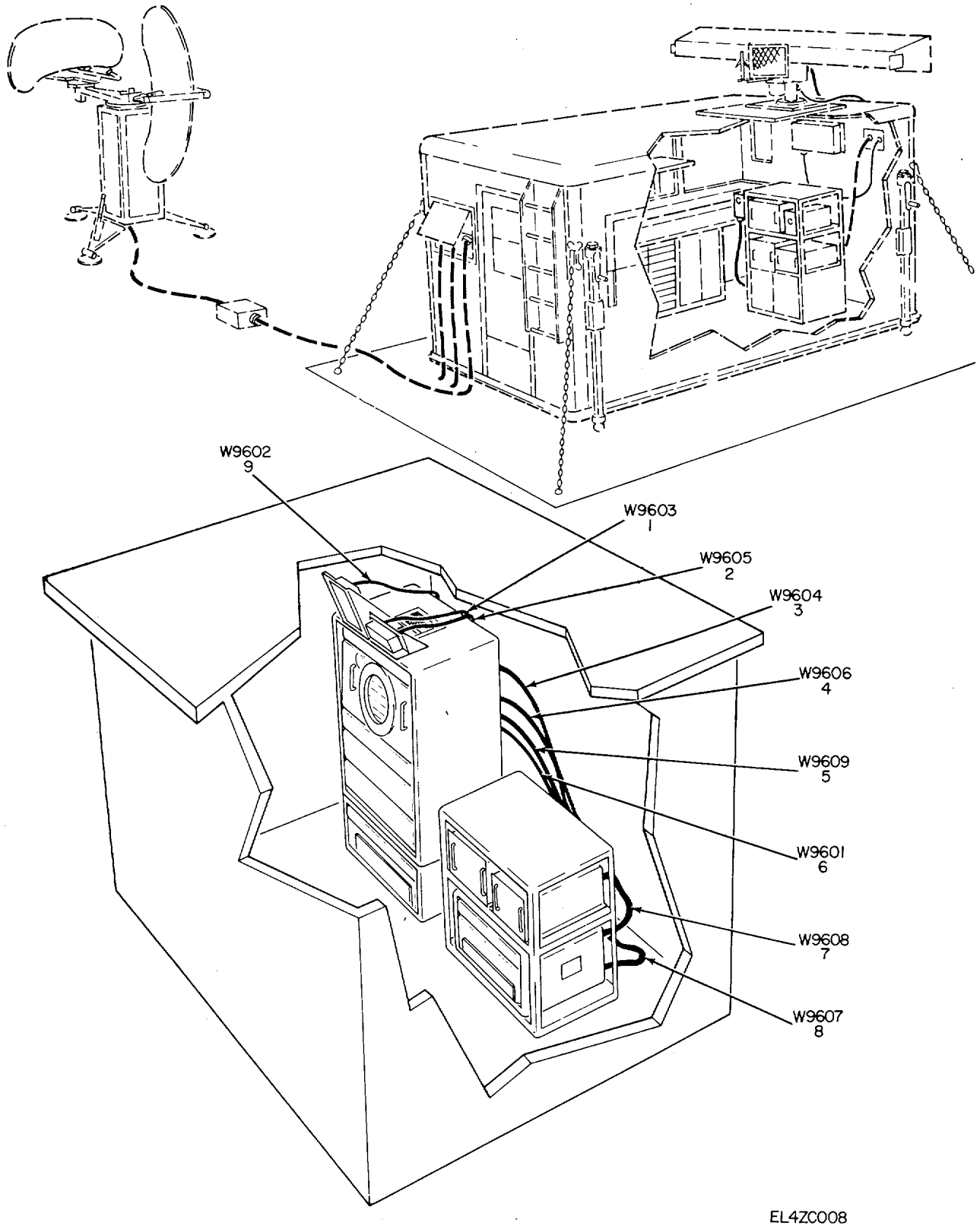
EL4ZC007

Figure 4. Distribution Box J-2972/G.

## SECTION II

TM11-5840-345-34P

(1) ILLUSTRATION		(2)	(3)	(4)	(5)	(6) DESCRIPTION	(7)	(8)
(a) FIG NO	(b) ITEM NO	SMR CODE	NATIONAL STOCK NUMBER	PART NUMBER	FSCM	USABLE ON CODE	U/M	QTY INC IN UNIT
						GROUP 0110 DISTRIBUTION BOX J-2972/G		
4	1	PAFZZ	5305-00-054-6652	MS51957-28	96906	SCREW, MACHINE.....	EA	8
4	2	PAFZZ	5310-00-722-5998	MS15795-805	96906	WASHER, FLAT .....	EA	12
4	3	PAFZZ	5310-00-929-6395	MS35338-136	96906	WASHER, LOCK .....	EA	4
4	4	PAFZZ	5310-00-934-9761	MS35649-264	96906	NUT, PLAIN, HEXAGO.....	EA	4
4	5	PAFZZ	5935-00-827-4649	MS3102R24-9S	96906	CONNECTOR, RECEPT .....	EA	1
4	6	PAFZZ	5935-00-578-2742	MS25043-24C	96906	COVER, ELEC, CONN.....	EA	1
4	7	PAFZZ	5305-00-054-6671	MS51957-46	96906	SCREW, MACHINE.....	EA	3
4	8	PAFZZ	5935-00-577-8646	MS25043-36C	96906	COVER, ELEC, CONN.....	EA	2
4	9	PAFZZ	5935-00-878-8174	MS3102R36-5S	96906	CONNECTOR, RECEPT .....	EA	1
4	10	PAFZZ	5935-00-755-2775	MS3102R36-5P	96906	CONNECTOR, RECEPT .....	EA	1
4	11	PAFZZ	5310-00-934-9759	MS35649-284	96906	NUT, PLAIN, HEXAGO.....	EA	8
4	12	PAFZZ	5305-00-054-6670	MS51957-45	96906	SCREW, MACHINE.....	EA	8
4	13	PAFZZ	5310-00-880-5978	M5175-807	96906	WASHER, FLAT .....	EA	21
4	14	PAFZZ	5310-00-933-8119	MS35338-137	96906	WASHER, LOCK .....	EA	15
4	15	XDFZZ		182448-1	24930	COVER, JUNCTION BOX .....	EA	1
4	16	PAFZZ	5975-00-497-2203	182447-1	24930	JUNCTION BOX .....	EA	1
4	17	PAFZZ	5940-00-557-4344	MS25036-120	96906	TERMINAL, LUG .....	EA	6
4	18	XDFZZ		GS10-286-4	24930	INSULATOR, PLATE.....	EA	1
4	19	PAFZZ	5305-00-054-6674	MS51957-49	96906	SCREW, MACHINE.....	EA	4
4	20	PAFZZ	5940-00-949-3125	356-31-04-071	71785	TERMINAL BOARD.....	EA	1
4	21	PAFZZ	5940-00-549-9242	322894	00779	TERMINAL, LUG .....	EA	4
					<b>17</b>			



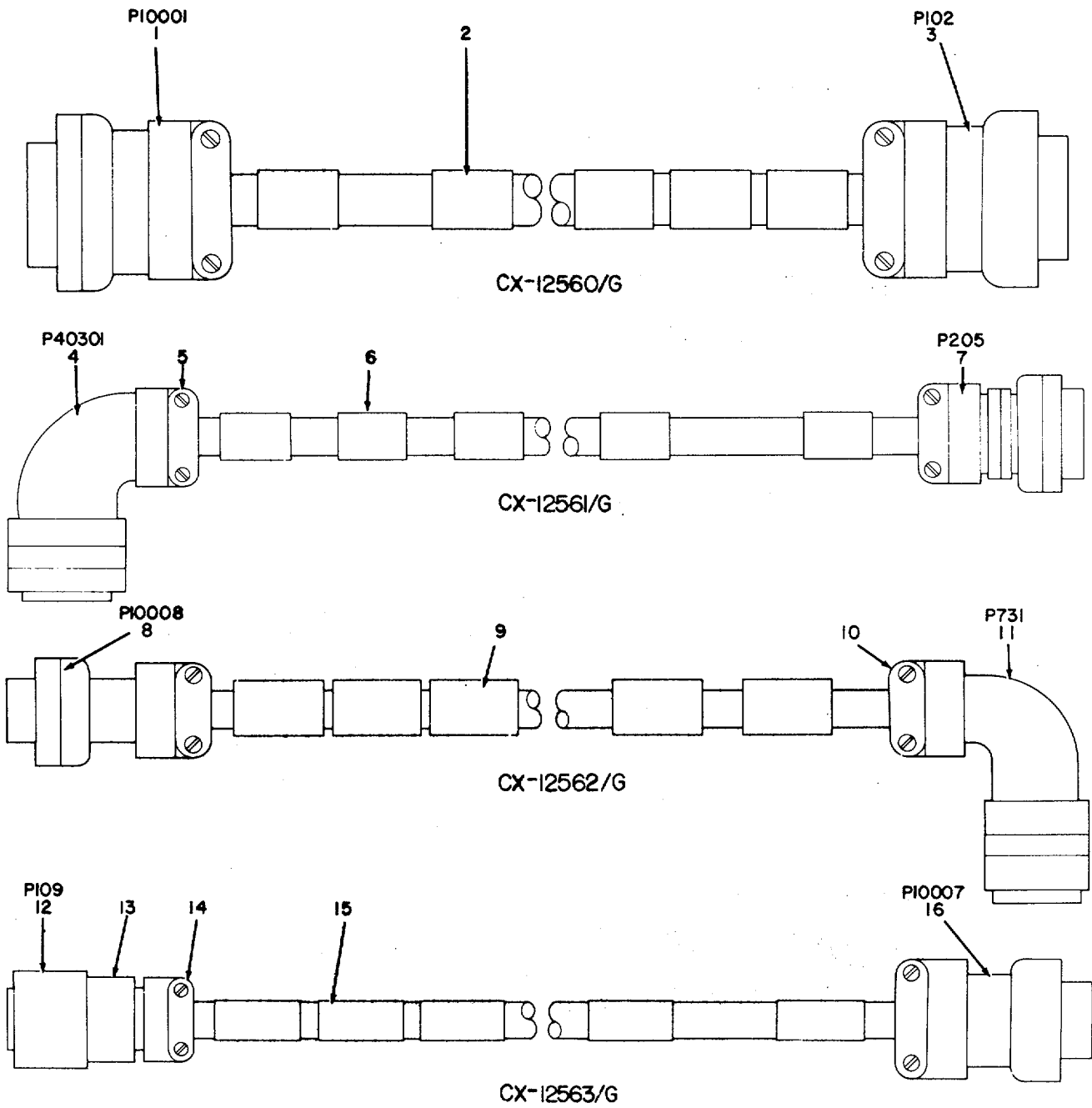
EL4ZC008

Figure 5. Cable Installation Multiplexer/Decoder.

SECTION II

TM11-5840-345-34P

(1) ILLUSTRATION		(2)	(3)	(4)	(5)	(6) DESCRIPTION	(7)	(8)
(a) FIG NO	(b) ITEM NO	SMR CODE	NATIONAL STOCK NUMBER	PART NUMBER	FSCM	USABLE ON CODE	U/M	QTY INC IN UNIT
						GROUP 02 CABLE INSTALLATION MULTIPLEXER/DECODER		
5	1	PAOFF	5995-00-471-8725	CX12562G30FT	80058	CABLE ASSEMBLY.....	EA	1
5	2	PAOFF	5995-00-232-6530	CX12564G30FT	80058	CABLE ASSEMBLY.....	EA	1
5	3	PAOFF	5995-00-232-6526	CX12563G30FT	80058	CABLE ASSEMBLY.....	EA	1
5	4	PAOFF	5995-00-463-4064	CG3664U30FT	80058	CABLE ASSEMBLY.....	EA	1
5	5	PAOFF	5995-00-185-0385	170161	24930	CABLE ASSEMBLY.....	EA	1
5	6	PAOFF	5995-00-480-1292	CX12560G30FT	80058	CABLE ASSEMBLY.....	EA	1
5	7	PAOFF	5995-00-185-0358	170160	24930	CABLE ASSEMBLY.....	EA	1
5	8	PAOFF	5995-00-470-4337	CG3664U10FT	80058	CABLE ASSEMBLY.....	EA	1
5	9	PAOFF	5995-00-232-6521	CX12561G30FT	80058	CABLE ASSEMBLY.....	EA	1
					<b>19</b>			



EL4ZC009

Figure 6. Cable Assemblies, RF and Power (Sheet 1 of 2).

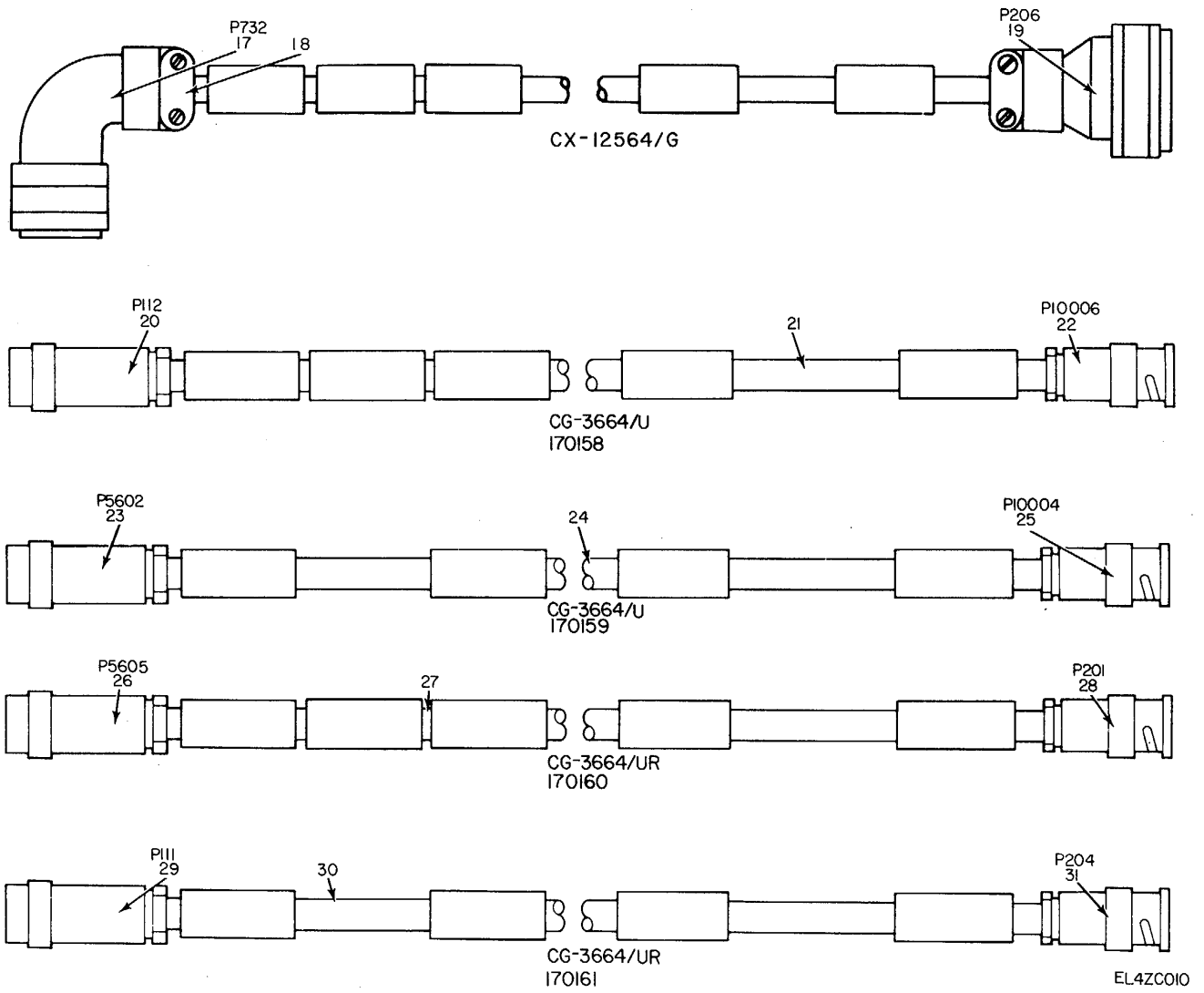


Figure 6. Cable Assemblies, RF and Power (Sheet 2 of 2).

## SECTIONII

TM11-5840-345-34P

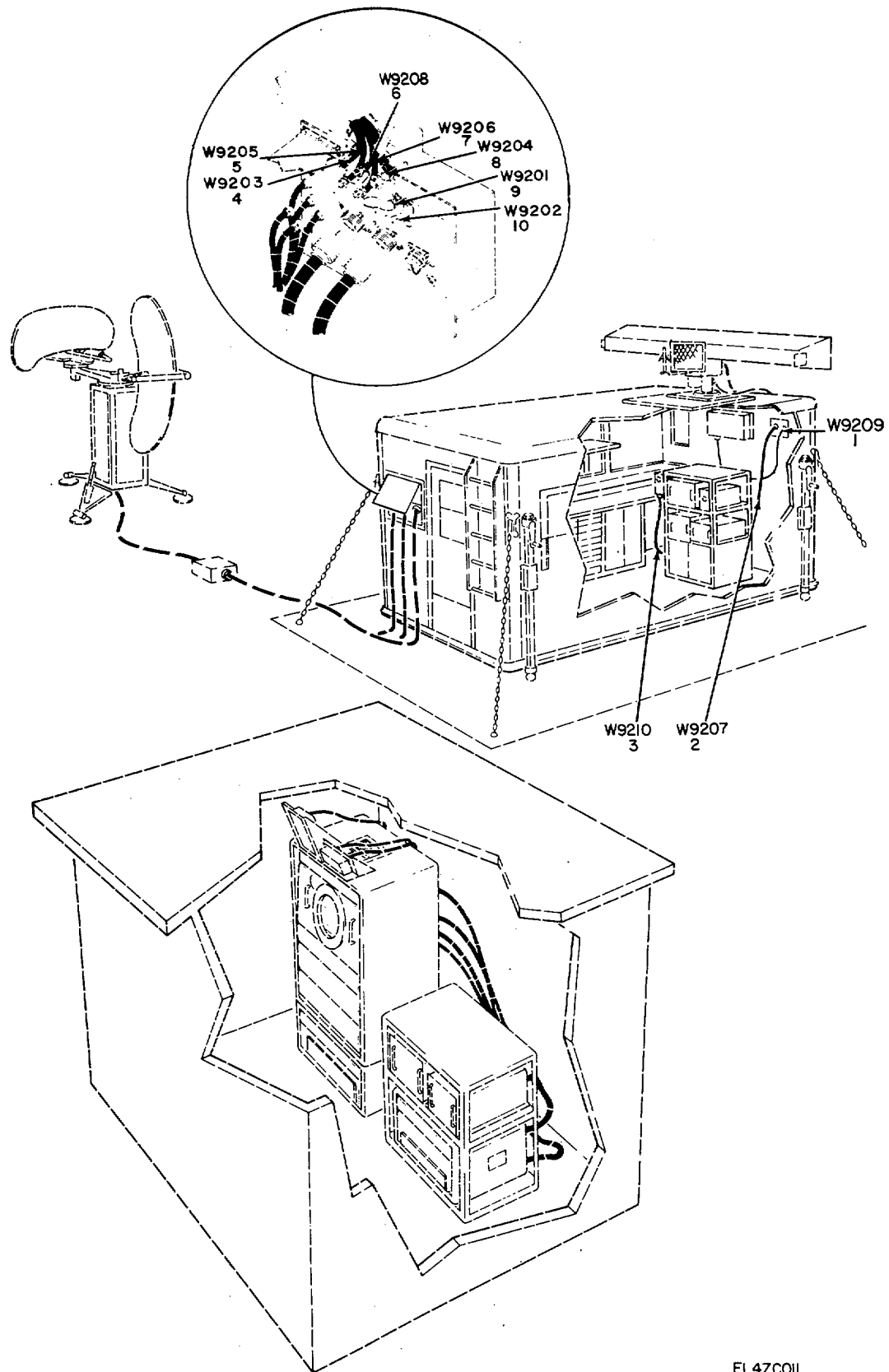
(1) ILLUSTRATION		(2)	(3)	(4)	(5)	(6) DESCRIPTION	(7)	(8)
(a) FIG NO	(b) ITEM NO	SMR CODE	NATIONAL STOCK NUMBER	PART NUMBER	FSCM	USABLEONCODE	U/M	QTY INC IN UNIT
						GROUP 0201 CABLE ASSEMBLY, SPECIAL PURPOSE, ELECTRICAL		
6	1	PAFZZ	5935-00-260-2660	MS3106F36-10SW	96906	CONNECTOR, PLUG.....	EA	1
6	2	PAFZZ	5975-00-944-1499	MS17822-1-9A	96906	STRAP, CABLE, IDENT .....	EA	4
6	3	PAFZZ	5935-00-256-8543	MS3106F36-10S	96906	CONNECTOR, PLUG.....	EA	1
						GROUP 0202 CABLE ASSEMBLY, POWER ELECTRICAL		
6	4	PAFZZ	5935-00-806-3564	MS3108R28-12S	96906	CONNECTOR, PLUG.....	EA	1
6	5	PAFZZ	5935-00-280-2353	MS3057-16A	96906	CLAMP, CA, ELEC, CONN .....	EA	1
6	6	PAFZZ	5975-00-944-1499	MS17822-1-9A	96906	STRAP, CABLE, D .....	EA	4
6	7	PAFZZ	5935-00-493-5827	MS3106F28-12P	96906	CONNECTOR, PLUG.....	EA	1
						GROUP 0203 CABLE ASSEMBLY, POWER, ELECTRICAL		
6	8	PAFZZ	5935-00-224-5988	MS3106GIB-IP	96906	CONNECTOR, PLUG, ELEC .....	EA	1
6	9	PAFZZ	5975-00-944-1499	MS17822-1-9A	96906	STRAP, CABLE, ID .....	EA	4
6	10	PAFZZ	5935-00-809-0786	MS3057-10A	96906	CLAMP, CABLE, ELEC .....	EA	1
6	11	PAFZZ	5935-00-835-4339	MS3108R18-IS	96906	CONNECTOR, PLUG.....	EA	1
						GROUP 0204 CABLE ASSEMBLY, POWER, ELECTRICAL		
6	12	PAFZZ	5935-00-586-6920	10-107618-8S	77820	CONNECTOR, PLUG.....	EA	1
6	13	PAFZZ	5935-00-826-8548	10-113138-18	77820	ADAPTER, CABLE CLAMP.....	EA	1
6	14	PAFZZ	5935-00-809-0786	MS3057-10A	96906	CLAMP, CABLE, ELEC .....	EA	1
6	15	PAFZZ	5975-00-944-1499	MS17822-1-9A	96906	STRAP, CABLE, ID .....	EA	4
6	16	PAFZZ	5935-00-233-3989	MS3106F22-23P	96906	CONNECTOR, PLUG.....	EA	1
						GROUP 0205 CABLE ASSEMBLY, POWER, ELECTRICAL		
6	17	PAFZZ	5935-00-846-8665	MS3108R1457S	96906	CONNECTOR, PLUG.....	EA	1
6	18	PAFZZ	5935-00-280-2195	MS3057-6A	96906	CLAMP, CABLE, ELEC .....	EA	1
6	19	PAFZZ	5935-00-256-8541	MS3106F14S7P	96906	CONNECTOR, PLUG.....	EA	1
						GROUP 0206 CABLE ASSEMBLY, RADIO FREQUENCY		
6	20	PAFZZ	5935-00-133-8671	M39012-15-0001	81349	CONNECTOR, PLUG.....	EA	1
6	21	PAFZZ	6145-00-661-0191	RG59BU	80058	CABLE, RADIO, FREQ.....	FT	30
6	22	PAFZZ	5935-00-850-9157	UG260FU	80058	CONNECTOR, PLUG.....	EA	1
						GROUP 0207 CABLE ASSEMBLY, RADIO FREQUENCY		
6	23	PAFZZ	5935-00-133-8671	M39012-15-0001	81349	CONNECTOR, PLUG.....	EA	1
6	24	PAFZZ	6145-00-661-0191	RG59BU	80058	CABLE, RADIO FREQ.....	FT	10
6	25	PAFZZ	5935-00--850-9157	UG260FU	8005d	CONNECTOR, PLUG.....	EA	1
						GROUP 0208 CABLE ASSEMBLY, RADIO FREQUENCY		
6	26	PAFZZ	5935-00-133-8671	M390L2-15-0001	81349	CONNECTOR, PLUG.....	EA	1
6	27	PAFZZ	6145-00-661-0191	RG598U	80058	CABLE, RADIO FREQ.....	FT	10
6	28	PAFZZ	5935-00-850-9157	UG260FU	80058	CONNECTOR, PLUGEA		
						GROUP 0209 CABLE ASSEMBLY, RADIO FREQUENCY		
6	29	PAFZZ	5935-00-133-8671	M39012-15-0001	81349	CONNECTOR, PLUG.....	EA	1
6	30	PAFZZ	6145-00-661-0191	RG59BU	80058	CABLE, RADIO FREQ.....	EA	30
					<b>23</b>			



SECTIONII

TM11-5840-345-34P

(1) ILLUSTRATION		(2)	(3)	(4)	(5)	(6) DESCRIPTION	(7)	(8)
(a) FIG NO	(b) ITEM NO	SMR CODE	NATIONAL STOCK NUMBER	PART NUMBER	FSCM	USABLEONCODE	U/M	QTY INC IN UNIT
6	31	PAFZZ	5935-00-850-9157	UG26OFU	80058  <b>24</b>	CONNECTOR, PLUG.....	EA	1



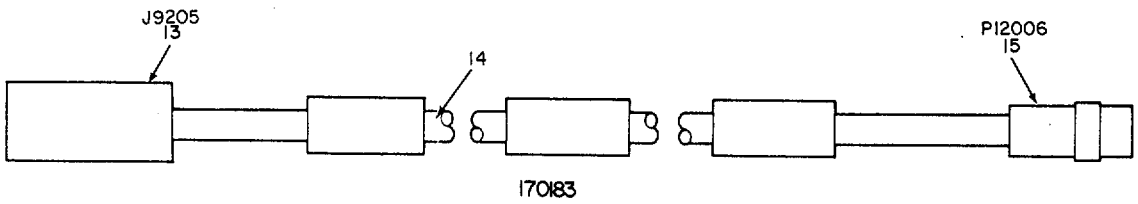
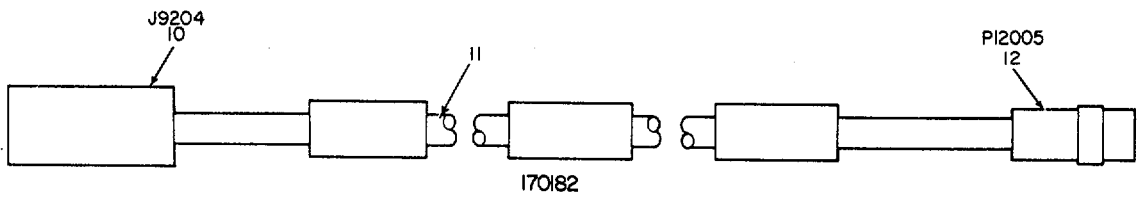
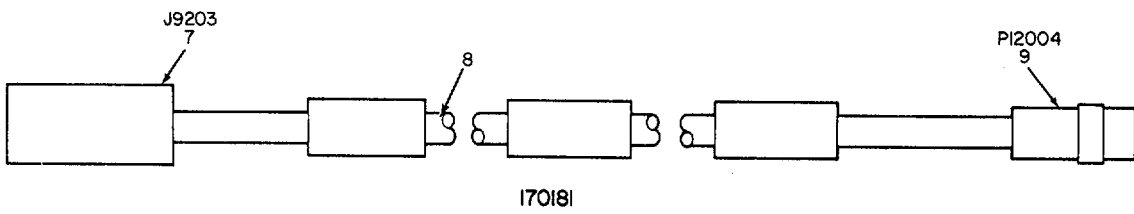
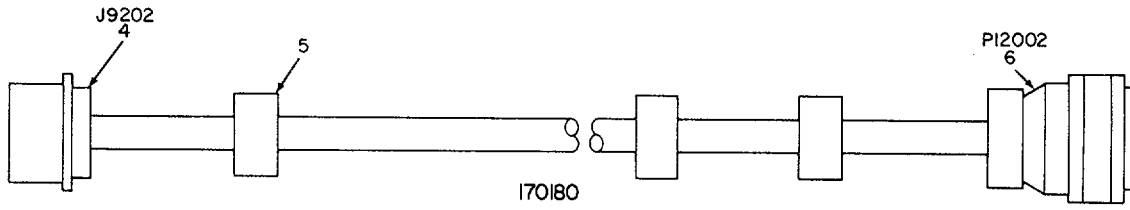
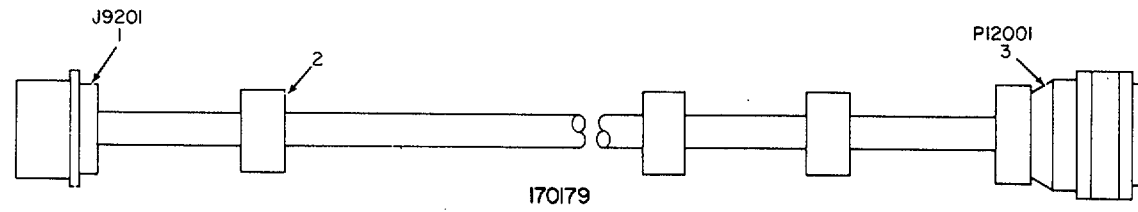
EL4ZCO11

Figure 7. Shelter Cable Installation.

SECTION II

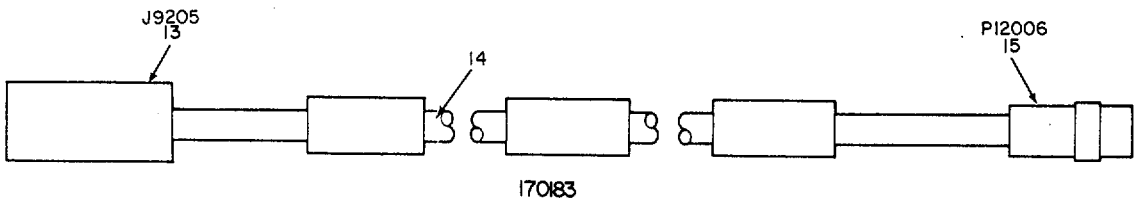
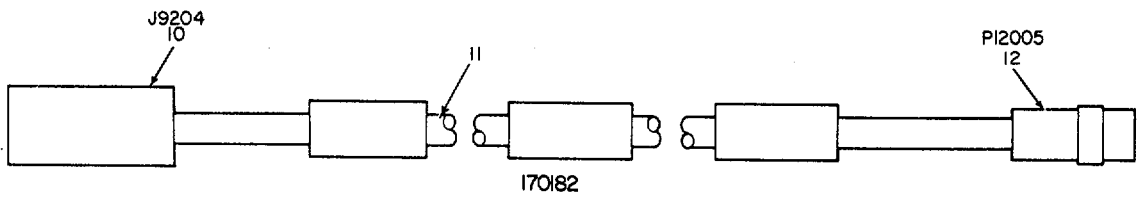
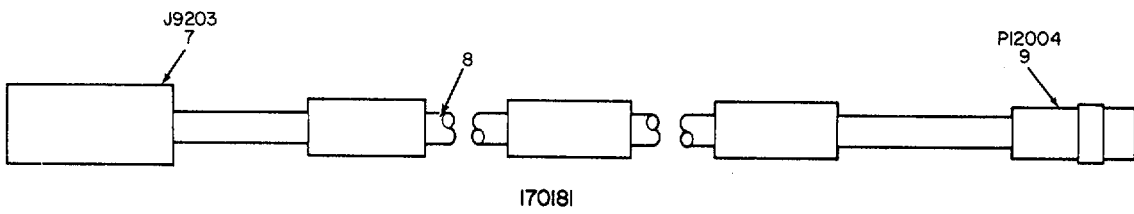
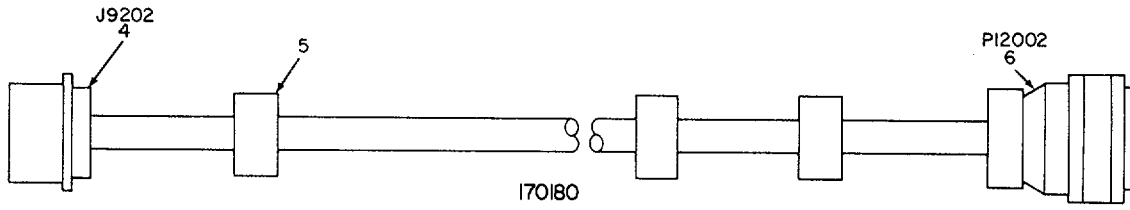
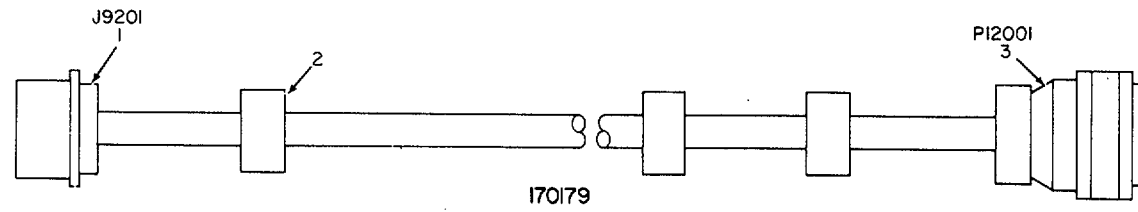
TM11-5840-345-34P

(1) ILLUSTRATION		(2)	(3)	(4)	(5)	(6) DESCRIPTION	(7)	(8)
(a) FIG NO	(b) ITEM NO	SMR CODE	NATIONAL STOCK NUMBER	PART NUMBER	FSCM	USABLEONCODE	U/M	QTY INC IN UNIT
						GROUP 03 SHELTER CABLE INSTALLATION		
7	1	XDOFF		170187	24930	CABLE ASSY, RF .....	EA	1
7	2	XDOFF		170185	24930	CABLE ASSY, PWR, ELEC .....	EA	1
7	3	XDOFF		170188	24930	CABLE ASSY, PWR, ELEC .....	EA	1
7	4	XDOFF		170181	24930	CABLE ASSY, RF .....	EA	1
7	5	XDOFF		170183	24930	CABLE ASSY, RF .....	EA	1
7	6	XDOFF		170186	24930	CABLE ASSY, RF .....	EA	1
7	7	XDOFF		170184	24930	CABLE ASSY, RF .....	EA	1
7	8	XDOFF		170182	24930	CABLE ASSY, RF .....	EA	1
7	9	XDOFF		176179	24930	CABLE ASSY, PWR, ELEC .....	EA	1
7	10	XDOFF		170180	24930	CABLE ASSY, PWR, ELEC .....	EA	1
					<b>27</b>			



EL4ZC012

Figure 8. Cable Assemblies, Power, Electrical, RF (Sheet 1 of 2).



EL4ZC012

Figure 8. Cable Assemblies/Power, Electrical, RF (Sheet 2 of 2).

## SECTION II

TM11-5840-345-34P

(1) ILLUSTRATION		(2)	(3)	(4)	(5)	(6) DESCRIPTION	(7)	(8)
(a) FIG NO	(b) ITEM NO	SMR CODE	NATIONAL STOCK NUMBER	PART NUMBER	FSCM	USABLE ON CODE	U/M	QTY INC IN UNIT
						GROUP 0301 CABLE ASSEMBLY, POWER, ELECTRICAL		
8	1	PAFZZ	5935-00-725-2550	MS3102R36-10P	96906	CONNECTOR, RECEPT .....	EA	1
8	2	PAFZZ	5975-00-944-1499	MS17822-1-9A	96906	STRAP, CABLE, ID .....	EA	3
8	3	PAFZZ	5935-00-Z56-8543	MS3106F36-10	96906	CONNECTOR, PLUG .....	EA	1
						GROUP 0302 CABLE ASSEMBLY, POWER, ELECTRICAL		
8	4	PAFZZ	5935-00-827-1149	MS3102R36-10PX	96906	CONNECTOR, RECEPT .....	EA	1
8	5	PAFZZ	5975-00-944-1499	MS17822-1-9A	96906	STRAP, CABLE, ID .....	EA	3
8	6	XDFZZ		MS3106F36-10SY	96906	CONNECTOR, PLUG, ELEC .....	EA	1
						GROUP 0303 CABLE ASSEMBLY, RADIO, FREQUENCY		
8	7	XDFZZ	5935-00-138-1468	19516	71468	CONNECTOR, RECEPT .....	EA	1
8	8	PAFZZ	6145-00-661-0191	RG598U	80058	CABLE, RADIO, FREQ.....	FT	21
8	9	PAFZZ	5935-00-850-9157	UG260FU	80058	CONNECTOR, PLUG.....	EA	1
						GROUP 0304 CABLE ASSEMBLY, RADIO, FREQUENCY		
8	10	PAFZZ	5935-00-412-3576	19517	91737	CONNECTOR, RECEPT .....	EA	1
8	11	PAFZZ	6145-00-661-0191	RGS9BU	80058	CABLE, RADIO, FREQ.....	FT	21
8	12	PAFZZ	5935-00-850-9157	UG260FU	80058	CONNECTOR, PLUG.....	EA	1
						GROUP 0305 CABLE ASSEMBLY, RADIO, FREQUENCY		
8	13	PAFZZ	5935-00-138-1468	19516	71468	CONNECTOR, RECEPT .....	EA	1
8	14	PAFZZ	6145-00-661-0191	R0590U	80058	CABLE, RADIO, FREQ.....	FT	21
8	15	PAFZZ	5935-00-860-9157	UG260FU	80058	CONNECTOR, PLUG.....	EA	1
						GROUP 0306 CABLE ASSEMBLY, RADIO, FREQUENCY		
8	16	PAFZZ	5935-00-138-1468	19516	71468	CONNECTOR, RECEPT .....	EA	1
8	17	PAFZZ	6145-00-661-0191	RG59BU	80058	CABLE, RADIO, FREQ.....	FT	21
8	18	PAFZZ	5935-00-850-9157	UG260FU	80008	CONNECTOR, PLUG.....	EA	1
						GROUP 0307 CABLE ASSEMBLY, POWER, ELECTRICAL		
8	19	PAFZZ	5935-00-682-0567	MS3102R22-19S	96906	CONNECTOR, RECEPT .....	EA	1
8	20	PAFZZ	5975-00-944-1499	MS17822-1-9A	96906	STRAP, CABLE, ID .....	EA	3
8	21	PAFZZ	5935-00-256-8542	MS3106F22-19P	96906	CONNECTOR, PLUG.....	EA	1
						GROUP 0308 CABLE ASSEMBLY, RADIO, FREQUENCY		
8	22	XDFZZ		8514	91737	CONNECTOR, PLUG, ELEC .....	EA	1
8	23	PAFZZ	6145-00-661-0191	RG59BU	80058	CABLE, RADIO, FREQ.....	FT	18
8	24	PAFZZ	5935-00-850-9157	UG260FU	80058	CONNECTOR, PLUG.....	EA	1
						GROUP 0309 CABLE ASSEMBLY, RADIO, FREQUENCY		
8	25	PAFZZ	5935-00-062-1254	UG160FU	80058	CONNECTOR, RECEPT .....	EA	1
8	26	PAFZZ	6145-00-660-8054	RG214AU	80058	CABLE, RADIO, FREQ.....	FT	4
8	27	PAFZZ	5935-00-839-0364	UG1213U	80058	CONNECTOR, PLUG.....	EA	1
						GROUP 0310 CABLE ASSEMBLY, POWER, ELECTRICAL		
8	28	PAFZZ	5935-00-406-4218	MS3106F22-9S	96906	CONNECTOR, PLUG.....	EA	1
8	29	PAFZZ	5975-00-944-1499	MS17822-1-9A	96906	STRAP, CABLE, ID .....	EA	2
8	30	PAFZZ	5940-00-143-4777	MS25036-157	96906	TERMINAL, LUG .....	EA	3

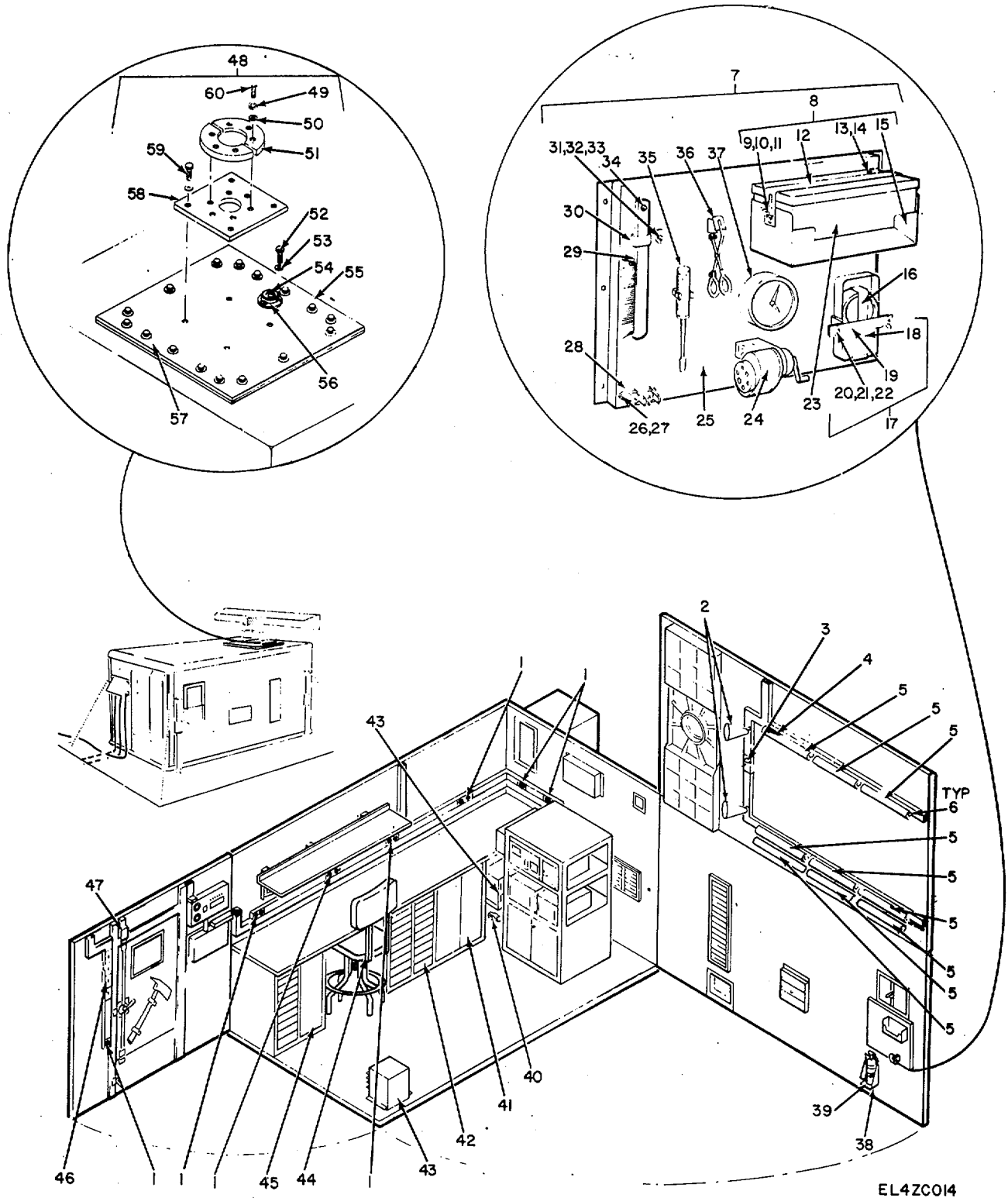


Figure 9. Shelter S-70/U Modified.

## SECTION II

TM11-5840-345-34P

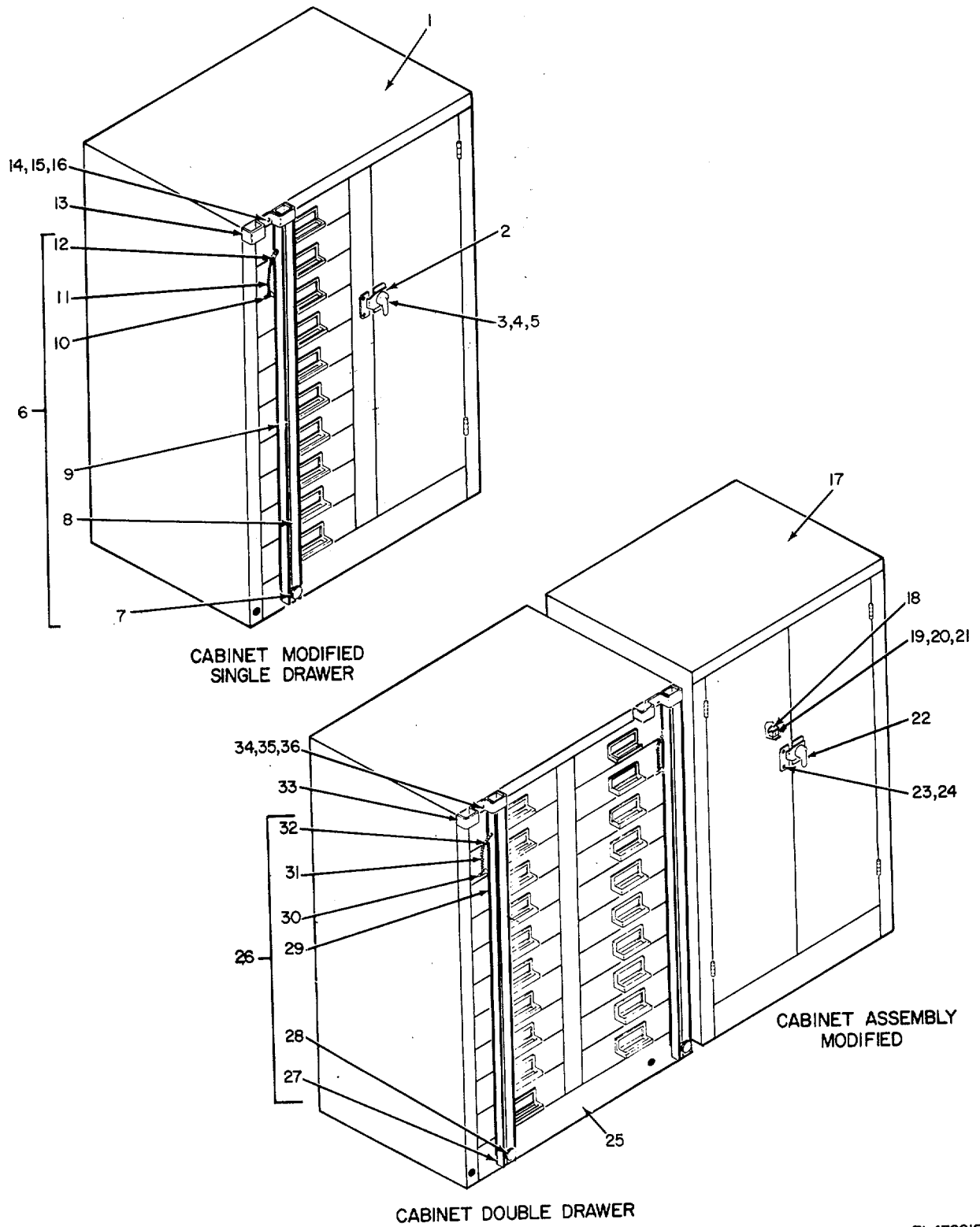
(1) ILLUSTRATION		(2)	(3)	(4)	(5)	(6) DESCRIPTION	(7)	(8)
(a) FIG NO	(b) ITEM NO	SMR CODE	NATIONAL STOCK NUMBER	PART NUMBER	FSCM	USABLE ON CODE	U/M	QTY INC IN UNIT
						GROUP 11 SHELTERS-70/U MODIFIED		
9	1	PAOZZ	5935-00-644-8597	9200	74545	CONNECTOR, RECEPT .....	EA	7
9	2	PAOZZ	6210-00-752-2543	825-0115	08621	LIGHT, INCANDESCENT .....	EA	2
9	3	XDOZZ		TS15	71218	SWITCH, THERMOSTATIC .....	EA	1
9	4	PAOZZ	6210-00-921-6682	SCB539466	80063	WINDOW, LIGHTING .....	EA	6
9	5	PAOZZ	6240-00-152-2996	F20T12CW	08805	LAMP, FLUORESCENT .....	EA	9
9	6	PAOZZ	6250-00-299-2884	FS2	71183	STARTER, FLUORESC .....	EA	9
9	7	XDOFF		A1-112360	14850	PANEL ASSY, CI .....	EA	1
9	8	XDOZZ		SCC539463	80063	BRACKET ASSY FAK .....	EA	1
9	9	PAOZZ	5310-00-080-8495	MS35425-39	96906	NUT, PLAIN, WING .....	EA	2
9	10	PAOZZ	5310-00-880-5977	MS15795-811	96906	WASHER, FLAT .....	EA	2
9	11	PAOZZ	5310-00-933-8121	MS35338-139	96906	WASHER, LOCK .....	EA	2
9	12	PAOZZ	5340-00-134-3460	SCB539465	80063	CLAMP ASSEMBLY .....	EA	1
9	13	PAOZZ	5310-00-809-8546	MS27183-8	96906	WASHER, FLAT .....	EA	6
9	14	PAOZZ	5305-00-989-7434	MS35207-263	96906	SCREW, MACHINE .....	EA	6
9	15	PAOZZ	5340-00-134-3461	SCD539464	80063	HOLDER ASSEMBLY .....	EA	1
9	16	PAOZZ	6230-00-729-9614	2106-7	32572	FLASHLIGHT .....	EA	1
9	17	XDOZZ		SCC539428	80063	BRACKET ASSY, LTRN .....	EA	1
9	18	PAOZZ	4940-00-408-4953	SCB539429	80063	MOUNT ASSEMBLY .....	EA	1
9	19	XDOZZ		SCB539432	80063	CLAMP ASSEMBLY .....	EA	1
9	20	PAOZZ	5310-00-080-8495	MS35425-39	96906	NUT, PLAIN, WING .....	EA	2
9	21	PAOZZ	5310-00-809-4058	MS27183-10	96906	WASHER, FLAT .....	EA	2
9	22	PAOZZ	5310-00-582-5965	MS35338-44	96906	WASHER, LOCK .....	EA	2
9	23	PAOZZ	6545-00-922-1200	GSA-F558	80244	FIRST AID KIT .....	EA	1
9	24	PAOZZ	7520-00-162-6178	SCC539503	80063	SHARPENER, PENCIL .....	EA	1
9	25	XDOZZ		A1-112350	14850	PANEL SUBASSEMBLY .....	EA	1
9	26	PAOZZ	5305-00-638-3293	MS35223-33	96906	SCREW, MACHINE .....	EA	4
9	27	PAOZZ	5305-00-983-8483	MS27183-5	96906	WASHER, FLAT .....	EA	4
9	28	PAOZZ	5120-00-392-8361	SCB539472	80063	PIN STRAIGHTENER .....	EA	1
9	29	XDOZZ		GSA	80244	BRUSH, HAND .....	EA	1
9	30	XDOZZ		SC8539420	80063	CLAMP ASSY, DB .....	EA	1
9	31	PAOZZ	5310-00-809-4058	MS27183-10	96906	WASHER, FLAT .....	EA	1
9	32	PAOZZ	5310-00-582-5965	MS35338-44	96906	WASHER, LOCK .....	EA	1
9	33	PAOZZ	5310-00-080-8495	MS35425-39	96906	NUT, PLAIN, WING .....	EA	1
9	34	PAOZZ	5315-00-177-0997	SCB539490	80063	PIN, STRAIGHT, THR .....	EA	1
9	35	PAOZZ	5120-00-234-8910	300989	32195	SCREWDRIVER, FLAT .....	EA	1
9	36	PAOZZ	5120-00-293-0808	GGGE00930	80244	TUBE PULLER .....	EA	1
9	37	PAQZZ	6645-00-303-4950	A11C	36922	CLOCK, AIRCRAFT .....	EA	1
9	38	PAOZZ	4210-00-595-4085	SCC589460	80063	BRACKET, FEXT .....	EA	1
9	39	PAOFF	4210-00-270-4512	MILE468TYPE1	81349	EXTINGUISHER, FIRE .....	EA	1
					<b>33</b>			



## SECTIONII

TM11-5840-345-34P

(1) ILLUSTRATION		(2)	(3)	(4)	(5)	(6) DESCRIPTION	(7)	(8)
(a) FIG NO	(b) ITEM NO	SMR CODE	NATIONAL STOCK NUMBER	PART NUMBER	FSCM	USABLEONCODE	U/M	QTY INC IN UNIT
9	40	PAOZZ	5120-00-900-6096	GGGH86	81349	HAMMER, HAND.....	EA	1
9	41	XDOFF		A1-111850	14850	CABINET ASSY, MOD .....	EA	1
9	42	XDOFF		A1-111830	14850	CABINET ASSY, MOD .....	EA	1
9	43	PAOZZ	4520-00-177-6198	5273L	81349	HEATER, ELECTRIC .....	EA	2
9	44	PAOZZ	7110-00-281-4469	AN/MT6-9	80058	CHAIR, DFTG ADJ.....	EA	1
9	45	XDOFF		A1-111840	14850	CABINET ASSY, MOD .....	EA	1
9	46	PAOZZ	5930-00-827-0034	1201	74545	SWITCH, TOGGLE .....	EA	4
9	47	PAOZZ	5930-00-683-2703	BZ2RQ18A2	91929	SWITCH, SENSITIVE.....	EA	1
9	48	XDOZZ		SKTAD107	14850	BASE, ANTENNA, SPRT .....	EA	1
9	49	PAOZZ	5310-00-937-0453	MS35338-145	96906	WASHER, LOCK .....	EA	6
9	50	PAOZZ	5310-00-951-7209	MS27183-22	96906	WASHER, FLAT .....	EA	10
9	51	XDFZZ		D1-112370	14850	RING, CLAMPING.....	EA	2
9	52	PAFZZ	5305-00-225-8510	MS90725-46	96906	BOLT, MACHINE.....	EA	16
9	53	PAFZZ	5310-00-809-3078	MS27183-11	96906	WASHER, FLAT .....	EA	16
9	54	PAFZZ	5310-00-880-7744	MS51967-4	96906	NUT, PLAIN, HEXAGO.....	EA	16
9	55	XDFZZ		D1-11240C	14850	PLATE, MOUNTING .....	EA	1
9	56	PAOZZ	5210-00-721-8960	GGGL211	81349	VIVAL, LEVEL .....	EA	1
9	57	XDFZZ		D1-1L239C	14850	PLATE, FILLER.....	EA	1
9	58	XDFZZ		D1-11238C	14850	PLATE, BASE.....	EA	1
9	59	PAFZZ	5305-00-724-5907	MS90725-157	96906	SCREW, CAP, HEXAGON .....	EA	4
9	60	PAOZZ	5305-00-724-5909	MS90725-161	96906	SCREW, CAP, HEXAGON .....	EA	6
					<b>34</b>			



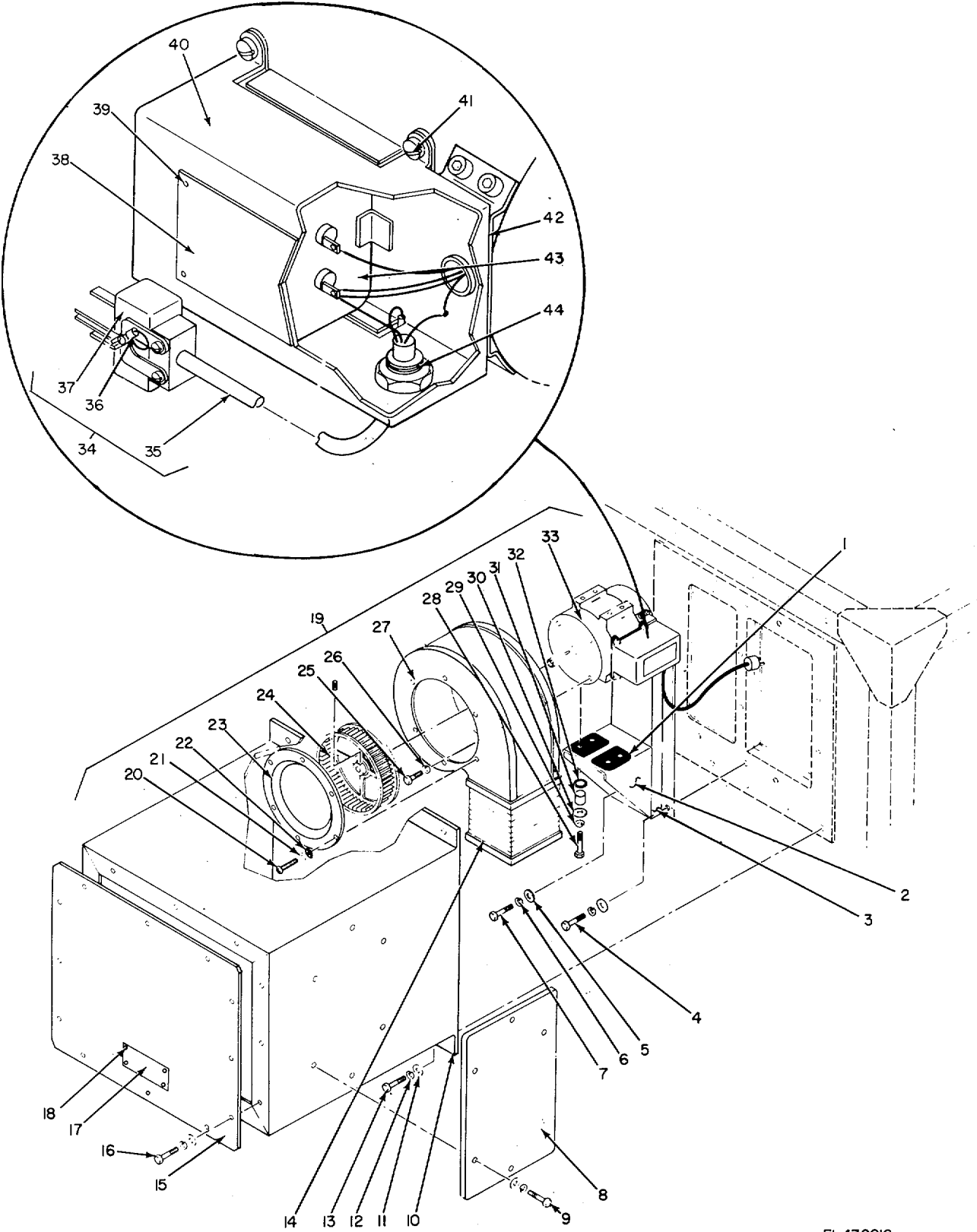
EL4ZC015

Figure 10. Shelter S-70/U Modified, Cabinet Assemblies.

SECTION II

TM 11-5840-345-34P

(1) ILLUSTRATION		(2)	(3)	(4)	(5)	(6) DESCRIPTION	(7)	(8)
(a) FIG NO.	(b) ITEM NO.	SMR CODE	NATIONAL STOCK NUMBER	PART NUMBER	FSCM	USABLE ON CODE	U/M	QTY INC IN UNIT
10	1	XDOFF		A1-11184AD	14850	CABINET, MODIFIED.....	EA	1
10	Z	XDOZZ		7020	01930	LATCH SET, RIM .....	EA	1
10	3	PAOZZ	5305-00-958-5477	MS35190-254	96906	SCREW, MACHINE.....	EA	4
10	4	PAOZZ	5310-00-809-8544	MS27183-7	96906	WASHER, FLAT .....	EA	4
10	5	PAOZZ	5310-00-811-3494	MS21044N08	96906	NUT, SELF-LOCKING.....	EA	4
10	6	XDOFF		SCC577977	80063	LOCKING DEVICE ASSY.....	EA	1
10	7	XDFZZ		SCB577975	80063	SCREW, EXT RLV BODY.....	EA	1
10	8	XDOZZ		SCC5779976	80063	CHANNEL, LOCKING DVC.....	EA	1
10	9	XDOZZ		SCC577977-1	80063	GASKET, RUBBER .....	EA	1
10	10	PAOZZ	5305-00-056-9945	MS24621-18	96906	SCREW, TAPPING, TF .....	EA	1
10	11	XDOZZ		SCB539527	80063	CHAIN, WELDLESS.....	EA	1
10	12	XDOZZ		SMB471506	80063	HOOK, CHAIN.....	EA	1
10	13	XDFZZ		SCB577993	80063	BRACKET, LOCKING DVC.....	EA	1
10	14	PAFZZ	5305-00-993-1848	MS35207-265	96906	SCREW, MACHINE.....	EA	2
10	15	PAFZZ	5310-00-809-8546	MS27183-8	96906	WASHER, FLAT .....	EA	2
10	16	PAFZZ	5310-00-045-3296	MS35338-43	96906	WASHER, LOCK .....	EA	2
10	17	XDOFF		A1-11185D1	14853	CABINET, MODIFIED .....	EA	1
10	18	PAOZZ	5340-00-134-3457	36N	14557	CATCH .....	EA	1
10	19	PAOZZ	5305-00-889-3000	MS35206-230	96906	SCREW, MACHINE.....	EA	3
10	20	PAOZZ	5310-00-983-8483	MS27183-5	96906	WASHER, FLAT .....	EA	3
10	21	PAOZZ	5310-00-081-8087	MS21044N06	96906	NUT, SELF-LOCKING.....	EA	3
10	22	XDOZZ		7020	01930	LATCH SET, RIM .....	EA	1
10	23	PAOZZ	5305-00-958-5477	MS35190-254	96906	SCREW, MACHINE.....	EA	4
10	24	PAOZZ	5310-00-811-3494	MS21044N08	96906	NUT, SELF-LOCKING.....	EA	4
10	25	XDOFF		A1-11183DI	14850	CABINET, MODIFIED.....	EA	1
10	26	XDOFF		SCC577977	80063	LOCKING DEVICE ASSY.....	EA	1
10	27	XDOZZ		SCC577976	80063	CHANNEL, LOCKING DVC.....	EA	1
10	28	XDOZZ		SCB577975	80063	SCREW, EXT RLV BODY.....	EA	1
10	29	XDOZZ		SCC577977-1	80063	GASKET, RUBBER .....	EA	1
10	30	PAOZZ	5305-00-056-9945	MS24621-18	96906	SCREW, TAPPING, TF .....	EA	1
10	31	XDOZZ		SCB539527	80063	CHAIN, WELDLESS.....	EA	1
10	32	XDOZZ		SMB471506	80063	HOOK, CHAIN.....	EA	1
10	33	XDFZZ		SCB577993	80063	BRACKET, LOCKING DVC.....	EA	2
10	34	PAFZZ	5305-00-993-1848	MS35207-265	96906	SCREW, MACHIN E.....	EA	4
10	35	PAFZZ	5310-00-809-8546	MS27183-8	96906	WASHER, FLAT .....	EA	4
10	36	PAFZZ	5310-00-045-3296	MS35338-43	96906	WASHER, LOCK .....	EA	4
					<b>37</b>			



EL 4ZCO16

Figure 11. Fan Installation Exterior.

## SECTION II

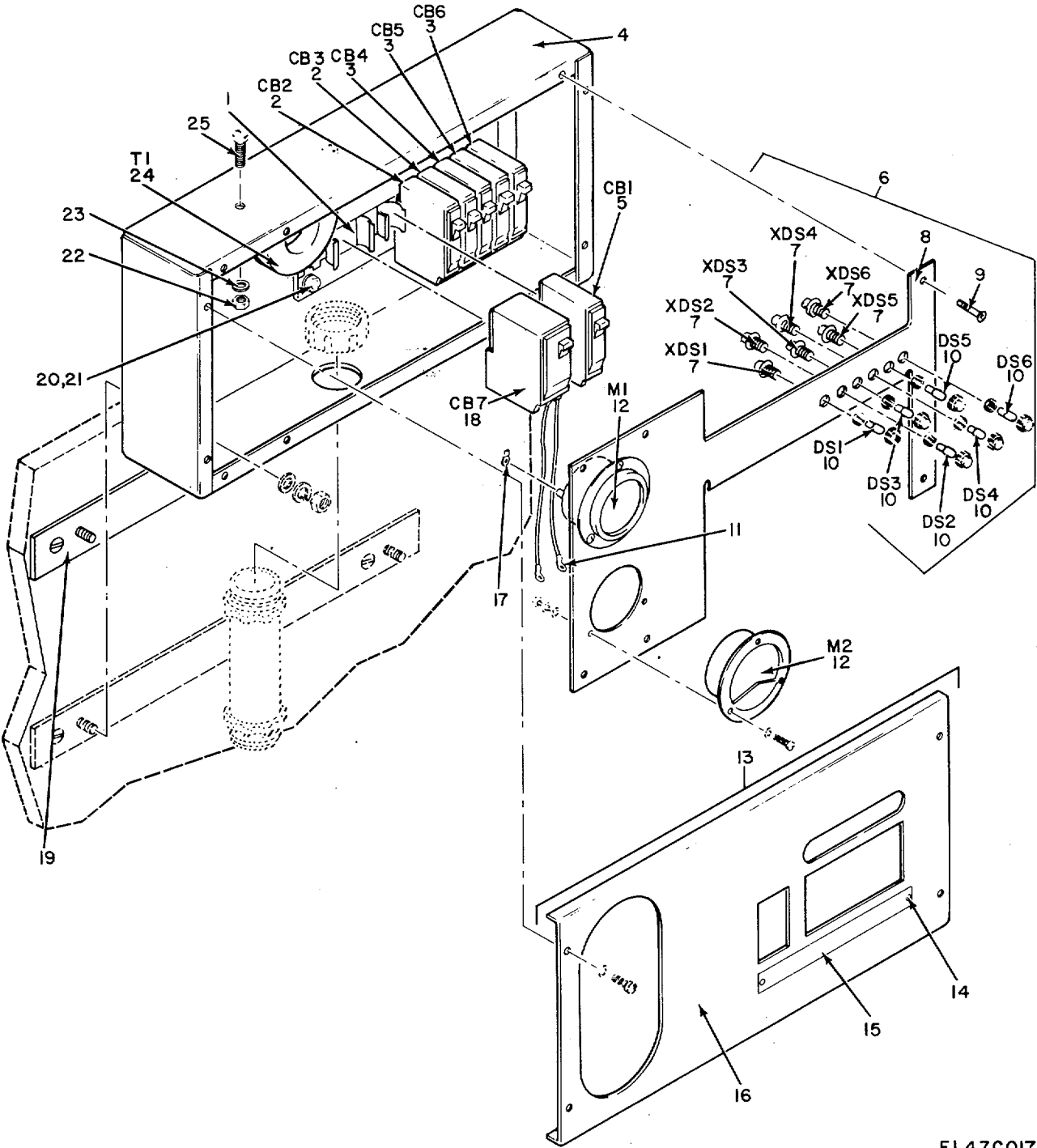
TM 11-5840-345-34P

(1) ILLUSTRATION		(2)	(3)	(4)	(5)	(6) DESCRIPTION	(7)	(8)
(a) FIG NO.	(b) ITEM NO.	SMR CODE	NATIONAL STOCK NUMBER	PART NUMBER	FSCM	USABLE ON CODE	U/M	QTY INC IN UNIT
						GROUP 18 FAN INSTALLATION EXTERIOR		
11	1	XDFZZ		SCB339866	80063	CUSHION.....	EA	2
11	2	XDFZZ		SCD539967	80063	BRACKET.....	EA	1
11	3	XDFZZ		SCC539966	80063	BRACKET ASSEMBLY.....	EA	1
11	4	PAFZZ	5305-00-225-9081	MS90725-36	96906	SCREW, CAP, HEXAGO.....	EA	4
11	5	PAFZZ	5310-00-081-4219	MS27183-12	96906	WASHER, FLAT.....	EA	8
11	6	PAFZZ	5310-00-407-9566	MS35338-45	96906	WASHER, LOCK.....	EA	8
11	7	PAFZZ	5306-00-225-8498	MS90725-33	96906	BOLT, MACHINE.....	EA	4
11	8	XDFZZ		SCD539981	80063	COVER ASSEMBLY.....	EA	1
11	9	XDFZZ		SCD0539982-8	80063	SCREW, MACHINE.....	EA	6
11	10	XDFFD		SCD539978	80063	BOX ASSEMBLY.....	EA	1
11	11	PAFZZ	5310-00-582-5965	MS35338-14	96906	WASHER, LOCK.....	EA	28
11	12	PAFZZ	5310-00-809-4058	MS27183-10	96906	WASHER, FLAT.....	EA	28
11	13	XDFZZ		SCD5399B2-9	80063	SCREW, MACHINE.....	EA	10
11	14	XDFZZ		SCD539982-1	80063	CLAMP.....	EA	2
11	15	XDFFD		SCD539980	80063	COVER ASSEMBLY.....	EA	1
11	16	XDFZZ		SCD539982-10	80063	SCREW, MACHINE.....	EA	12
11	17	XDFZZ		SCB539979	80063	PLATE, ID.....	EA	1
11	18	PAFZZ	5305-00-253-5612	MS21318-15	96906	SCREW, DRIVE.....	EA	4
11	19	XDFFD		SCD539899	80063	FAN ASSEMBLY.....	EA	1
11	20	PAOZZ	5305-00-984-6192	MS35206-244	96906	SCREW, MACHINE.....	EA	6
11	21	PAOZZ	5310-00-045-3299	MS35338-42	96906	WASHER, LOCK.....	EA	14
11	22	PAOZZ	5310-00-809-8544	MS27183-7	96906	WASHER, FLAT.....	EA	6
11	23	PAOZZ	4940-00-491-0503	SCC539614	80063	CONE.....	EA	1
11	24	PAOZZ	4143-00-554-3915	SCC539613-2	80063	IMPELLER, FAN, AXI.....	EA	1
11	25	PAOZZ	5305-00-269-3208	MS90725-57	96906	SCREW, CAP, HEXAGO.....	EA	4
11	26	PAOZZ	5310-00-637-9541	MS35338-46	96906	WASHER, LOCK.....	EA	4
11	27	XDOZZ		SCC539612	80063	HOUSING, BLOWER.....	EA	1
11	28	PAOZZ	5305-00-269-2805	MS90726-62	96906	SCREW, CAP, HEXAGO.....	EA	4
11	29	PAOZZ	5310-00-637-9541	MS35338-46	96906	WASHERLOCK.....	EA	4
11	30	PAOZZ	5310-00-080-6004	MS27183-14	96906	WASHER, FLAT.....	EA	4
11	31	XDOZZ		SCB539892	80063	BUSHING.....	EA	4
11	32	XDOZZ		SCB681108	80063	SPACER.....	EA	4
11	33	PAOZZ	6105-00-563-5517	SCD539615	80063	MOTOR, AC.....	EA	1
11	34	XDFFD		SCC539839GP11	80063	CABLE ASSY, PWR, ELEC.....	EA	1
11	35	PAOZZ	4935-00-037-5118	SCC539839-1	80063	CABLE, PWR, ELEC.....	EA	1
11	36	XDDZZ		SCC539839-3	80063	TERMINAL, LUG.....	EA	1
11	37	XDDZZ		SCC539839-2	80063	CONNECTOR, PLUG, ELEC.....	EA	1
11	38	XDFZZ		SCB539619	80063	PLATE, ID.....	EA	1
11	39	PAFZZ	5320-00-637-5422	MS20470A3-4	96906	RIVET, SOLID.....	EA	4
					<b>39</b>			

SECTION II

TM 11-5840-345-34P

(1) ILLUSTRATION		(2)	(3)	(4)	(5)	(6) DESCRIPTION	(7)	(8)
(a) FIG NO.	(b) ITEM NO.	SMR CODE	NATIONAL STOCK NUMBER	PART NUMBER	FSCM	USABLE ON CODE	U/M	QTY INC IN UNIT
11	40	XDFZZ	5305-00-889-3002	SCC539617	80063	COVER, CAPACITOR.....	EA	1
11	41	PAFZZ		MS35206-242	96906	SCREW, MACHINE.....	EA	8
11	42	XDFZZ		SCD539618	80063	BASE, CAPACITOR.....	EA	1
11	43	XDFZZ		SCB539881	80063	CAPACITOR, FXD, PAPER.....	EA	1
11	44	XDFZZ		SCD539899-1	80063	BOX CONNECTOR, ELEC.....	EA	1
					<b>40</b>			



EL4ZC017

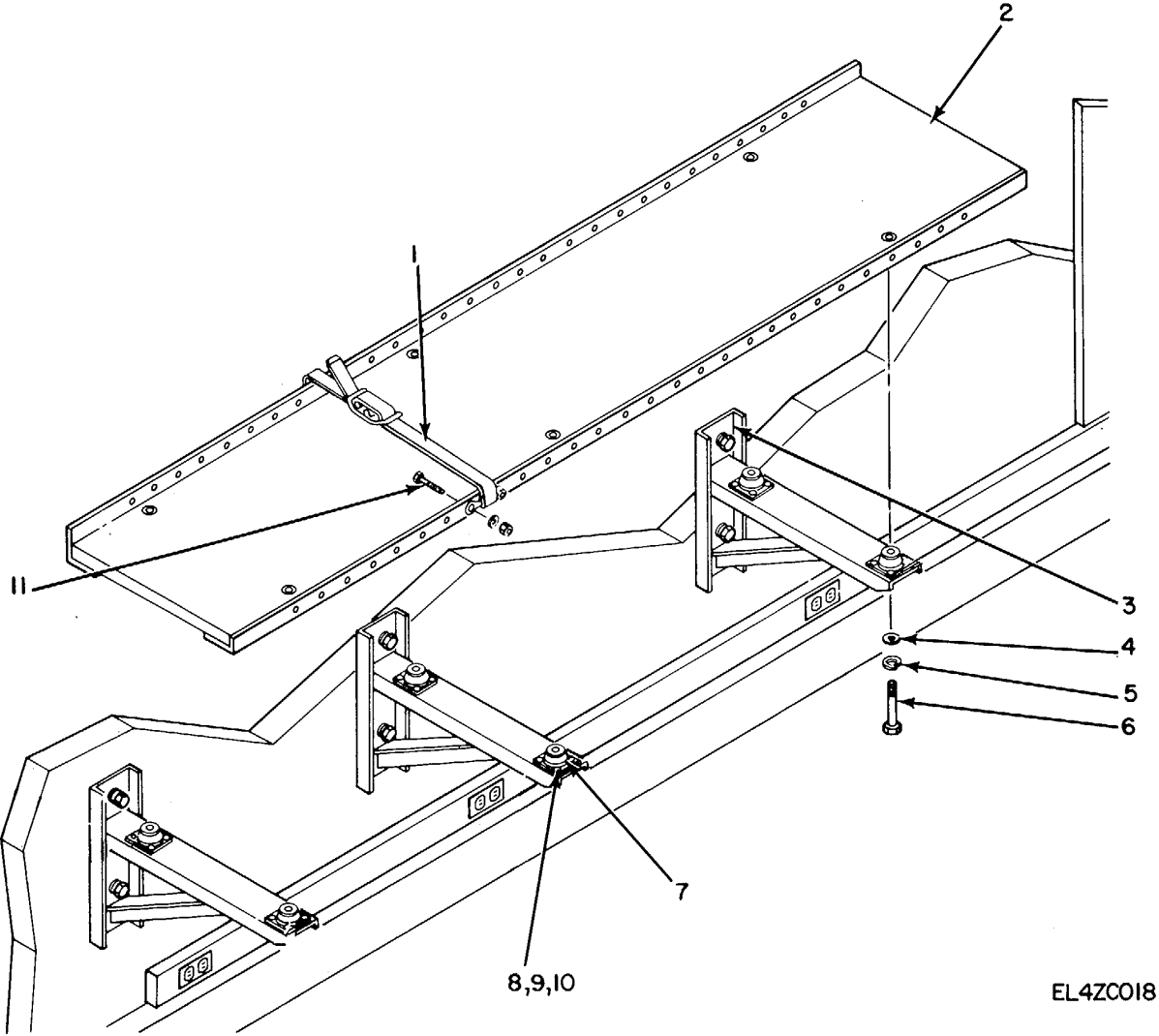
Figure 12. Box Assembly, Power Distribution.

SECTION II

TM 11-5840-345-34P

(1) ILLUSTRATION		(2)	(3)	(4)	(5)	(6) DESCRIPTION	(7)	(8)
(a) FIG NO.	(b) ITEM NO.	SMR CODE	NATIONAL STOCK NUMBER	PART NUMBER	FSCM	USABLE ON CODE	U/M	QTY INC IN UNIT
						GROUP 19 BOX ASSEMBLY, POWER DISTRIBUTION		
12	1	XDDZZ		A1-11191D1	14850	BASE ASSEMBLY, CB.....	EA	1
12	2	PAOZZ	5925-00-818-4811	00115	56365	CIRCUIT BREAKER.....	EA	2
12	3	PAOZZ	5925-00-583-7941	Q0120	56365	CIRCUIT BREAKER.....	EA	3
12	4	XDDZZ		A1-11189D	14850	BOX, PWR DISTR.....	EA	1
12	5	PAOZZ	5925-00-544-3741	Q0125	19804	CIRCUIT BREAKER.....	EA	1
12	6	XDFDD		SMC374284	80063	PLATE ASSY, METER.....	EA	1
12	7	PAOZZ	6210-00-087-4248	37-0408-0331-245	72619	LIGHT, INDICATOR.....	EA	6
12	8	XDDZZ		SMC374203	80063	PLATE, METER.....	EA	1
12	9	PAOZZ	5305-00-059-4553	MS35190-238	96906	SCREW, MACHINE.....	EA	6
12	10	PAOZZ	6240-00-223-9100	NES1	08805	LAMP, INCANDESCENT.....	EA	6
12	11	PAFZZ	5940-00-113-8184	31892	00779	TERMINAL, LUG.....	EA	2
12	12	XDDZZ		SMC374284-5	80063	AMMETER.....	EA	2
12	13	XDFDD		A1-11190D	14850	COVER ASSEMBLY, PWR.....	EA	1
12	14	PAOZZ	5320-00-582-3304	MS20600AD4W2	96906	RIVET.....	EA	2
12	15	XDDZZ		09-30348	14850	PLATE, IDENT.....	EA	1
12	16	XDDZZ		SCD547290	80063	COVER,PWR,DISTR BOX.....	EA	1
12	17	PAFZZ	5940-00-230-0515	31904	00779	TERMINAL,LUG.....	EA	2
12	18	PAFZZ	5925-00-785-9531	Q0260	56365	CIRCUIT BREAKER.....	EA	1
12	19	XDFZZ		A1-11187C	14850	SUPPORT ASSY, PWR DB.....	EA	2
12	20	PAFZZ	5310-00-060-2039	MS21044D08	96906	NUT, SELF-LOCKING.....	EA	4
12	21	PAFZZ	5310-00-809-8544	MS27183-7	96906	WASHER, FLAT.....	EA	4
12	22	PAFZZ	5310-00-877-5798	MS21044D3	96906	NUT, SELF-LOCKING.....	EA	2
12	23	PAFZZ	5310-00-809-8546	MS27183-8	96906	WASHER, FLAT.....	EA	2
12	24	PAFZZ	5950-00-892-8208	3CT118	93993	TRANSFORMER, CURRENT.....	EA	1
12	25	PAFZZ	5305-00-989-7435	MS35207-264	96906	SCREW, MACHINE.....	EA	2
					<b>43</b>			





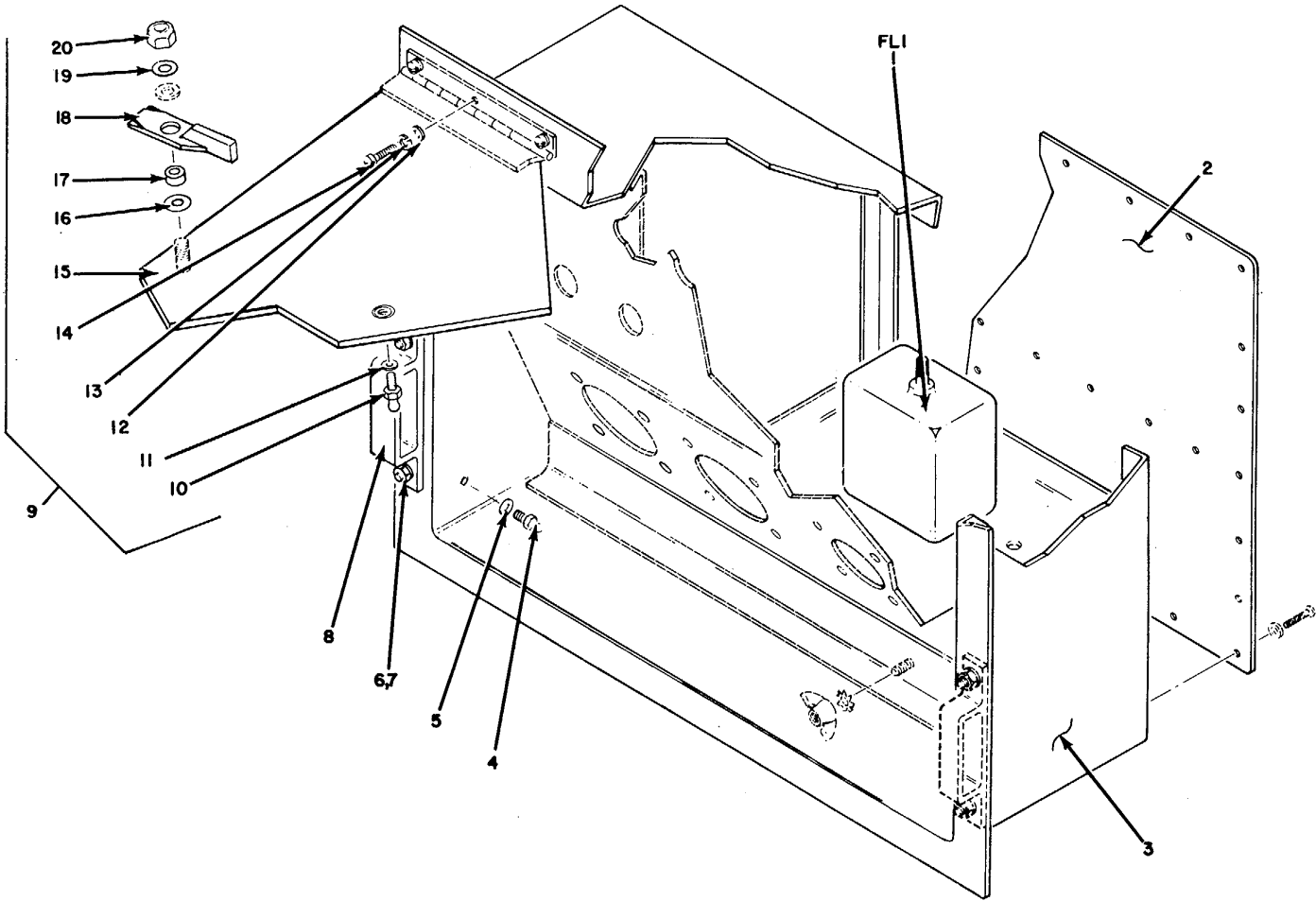
EL4ZC018

Figure 13. Shelf Assembly, Test Equipment.

SECTION II

TM 11-5840-345-34P

(1) ILLUSTRATION		(2)	(3)	(4)	(5)	(6) DESCRIPTION	(7)	(8)
(a) FIG NO.	(b) ITEM NO.	SMR CODE	NATIONAL STOCK NUMBER	PART NUMBER	FSCM	USABLE ON CODE	U/M	QTY INC IN UNIT
						GROUP 20 SHELF ASSEMBLY, TEST EQUIPMENT		
13	1	PAOZZ	5340-00-134-3473	SCB577936	80063	STRAP, WEBBING.....	EA	9
13	2	XDOZZ		A1-11163G	14850	SHELF ASSEMBLY.....	EA	1
13	3	XDOZZ		A1-11160D	14850	BRACKET ASSY, SHELF.....	EA	2
13	4	PAOZZ	5310-00-582-5677	MS15795-810	96906	WASHER, FLAT .....	EA	6
13	5	PAOZZ	5310-00-933-8121	MS35338-139	96906	WASHER, LOCK.....	EA	6
13	6	PAOZZ	5305-00-071-2238	MS90725-13	96906	SCREW, CAP, HEXAGO .....	EA	1
13	7	PAOZZ	5340-00-597-6696	5220	81860	MOUNT, RESILIENT .....	EA	6
13	8	PAOZZ	5305-00-054-6670	MS51957-45	96906	SCREW, MACHINE.....	EA	24
13	9	PAOZZ	5310-00-880-5978	MS15795-807	96906	WASHER, FLAT .....	EA	60
13	10	PAOZZ	5310-00-982-6814	MS21044C08	96906	NUT, SELF-LOCKING .....	EA	60
13	11	PAOZZ	5305-00-765-4257	MS51959-43	96906	SCREW, MACHINE.....	EA	36
					<b>45</b>			



EL4ZC019

Figure 14. Junction Box Assembly, Shelter.

SECTION II

TM 11-5840-345-34P

(1) ILLUSTRATION		(2)	(3)	(4)	(5)	(6) DESCRIPTION	(7)	(8)
(a) FIG NO.	(b) ITEM NO.	SMR CODE	NATIONAL STOCK NUMBER	PART NUMBER	FSCM	USABLE ON CODE	U/M	QTY INC IN UNIT
						GROUP 21 JUNCTION BOX ASSEMBLY, SHELTER		
14	1	XDFZZ		SA9885	81831	FILTER, RF INTFER.....	EA	1
14	2	XDOZZ		A1-11182C	14850	COVER ASSEMBLY.....	EA	1
14	3	XDFFD		A1-11166D	14850	BOX ASSEMBLY .....	EA	1
14	4	PADZZ	5307-00-099-8871	SCB539559	80063	STUD, BALL .....	EA	2
14	5	PADZZ	5310-00-045-4007	MS35338-41	96906	WASHER, LOCK .....	EA	2
14	6	PAFZZ	5310-00-877-5797	MS21044N3	96906	NUT, SELF-LOCKING .....	EA	4
14	7	PAFZZ	5310-00-619-1148	MS5795-808	96906	WASHER, FLAT .....	EA	4
14	8	PAFZZ	5340-00-134-3482	SCB539597	80063	KEEPER .....	EA	2
14	9	XDFFD		SCD539702	80063	COVER ASSEMBLY.....	EA	1
14	10	PADZZ	5307-00-099-8871	SCB539589	80063	STUO, BALL .....	EA	2
14	11	PADZZ	5310-00-045-4007	MS35338-41	96906	WASHER, LOCK .....	EA	2
14	12	PAOZZ	5310-00-880-5978	MS15795-807	96906	WASHER, FLAT .....	EA	8
14	13	PAOZZ	5310-00-933-8119	MS35338-137	96906	WASHER, LOCK .....	EA	8
14	14	XDOZZ		SCD539708-5	80063	SCREW, MACHINE .....	EA	8
14	15	XDDZZ		SCC539703	80063	COVER.....	EA	1
14	16	PAFZZ	5310-00-167-0812	AN960C10L	88044	WASHER, FLAT .....	EA	4
14	17	PAFZZ	3120-00-177-3935	SCB539595	80063	BUSHING, SLEEVE .....	EA	2
14	18	PAFZZ	5340-00-134-3470	SCC539594	80063	LATCH ASSEMBLY.....	EA	2
14	19	PAFZZ	5310-00-202-0331	SCB539596	80063	WASHER, SPRING TE .....	EA	2
14	20	PAFZZ	5310-00-926-1835	79NTM02	72962	NUT, SELF-LOCKING .....	EA	2
					47			

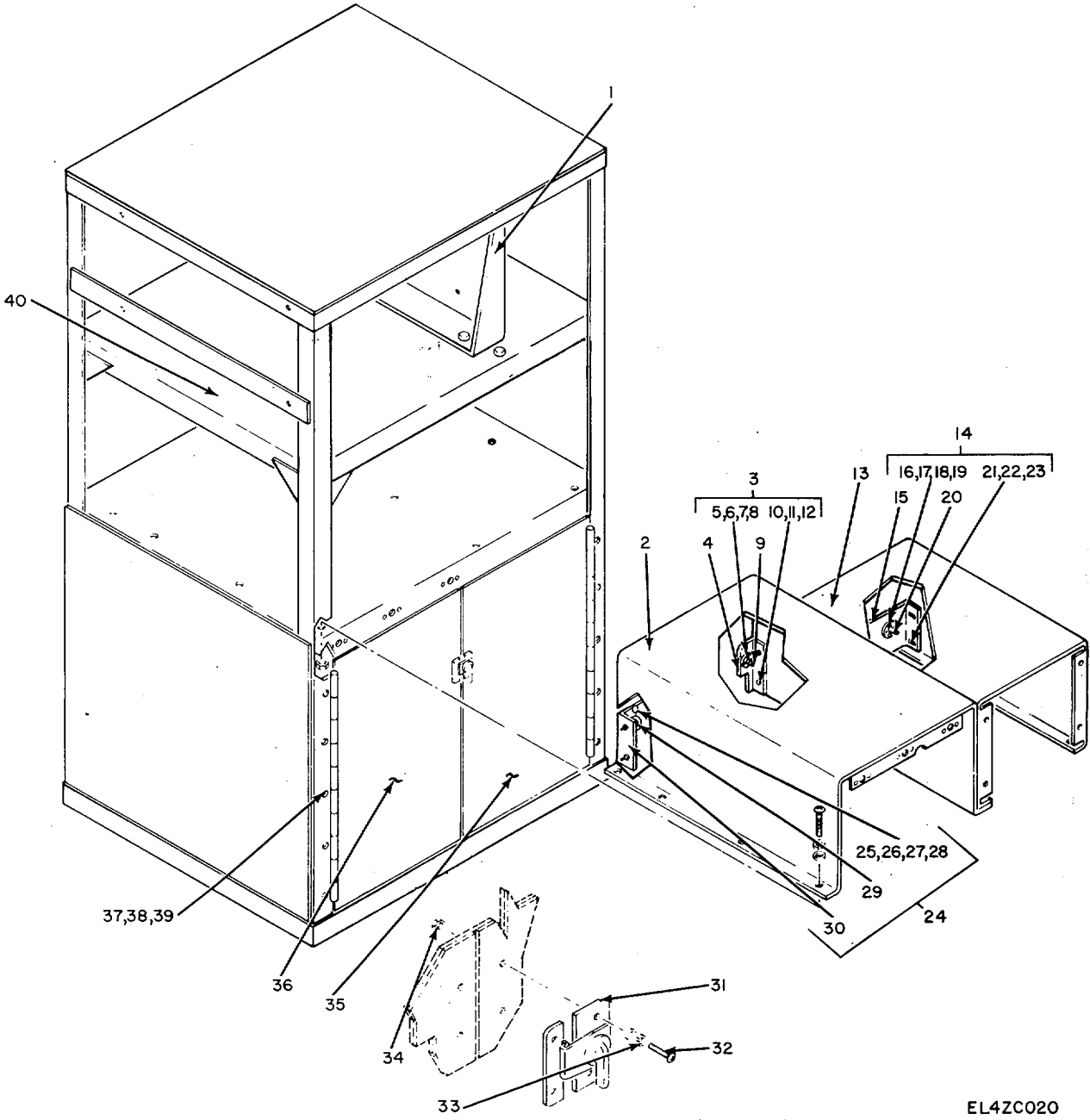


Figure 15. Rack, Electrical Equipment A1-11240D.

## SECTION II

TM 11-5840-345-34P

(1) ILLUSTRATION		(2)	(3)	(4)	(5)	(6) DESCRIPTION	(7)	(8)
(a) FIG NO.	(b) ITEM NO.	SMR CODE	NATIONAL STOCK NUMBER	PART NUMBER	FSCM	USABLE ON CODE	U/M	QTY INC IN UNIT
						GROUP 22 RACK, ELECTRICAL EQUIPMENT A1-11240D		
15	1	XDDZZ		A1-11438D	14850	BRACKET ASSEMBLY .....	EA	1
15	2	XDFFD		A1-111950	14850	COVER ASSEMBLY, DUST .....	EA	1
15	3	XDFFD		A1-11234C2	14850	PIN ASSEMBLY, GUIDE .....	EA	1
15	4	XDFZZ		A1-11234-2	14850	ANGLE .....	EA	1
15	5	PAFZZ	5315-00-844-3954	MS16562-21	96906	PIN, SPRING .....	EA	2
15	6	PAFZZ	5305-00-958-5477	MS35190-254	96906	SCREW, MACHINE .....	EA	2
15	7	PAFZZ	5310-00-809-8544	MS271B3-7	96906	WASHER, FLAT .....	EA	2
15	8	PAFZZ	5310-00-811-3494	MS21044N08	96906	NUT, SELF-LOCKING .....	EA	2
15	9	XDFZZ		A1-11232C	14850	PIN, GUIDE .....	EA	1
15	10	PAFZZ	5310-00-809-8546	MS27183-8	96906	WASHER, FLAT .....	EA	4
15	11	PAFZZ	5305-00-989-7435	MS35207-264	96906	SCREW, MACHINE .....	EA	4
15	12	PAFZZ	5310-00-877-5797	MS21044N3	96906	NUT, SELF-LOCKING .....	EA	4
15	13	XDFFD		A1-11199D	14850	COVER ASSEMBLY, DUST .....	EA	1
15	14	XDFFD		A1-11233C	14850	PANEL ASSY, GDE PIN .....	EA	1
15	15	XDFZZ		A1-11233C1	14850	PANEL, GUIDE PIN .....	EA	1
15	16	PAFZZ	5315-00-844-3954	MS16562-21	96906	PIN, SPRING .....	EA	4
15	17	PAFZZ	5305-00-958-5477	MS35190-254	96906	SCREW, MACHINE .....	EA	4
15	18	PAFZZ	5310-00-809-8544	MS27183-7	96906	WASHER, FLAT .....	EA	4
15	19	PAFZZ	5310-00-811-3494	MS21044N08	96906	NUT, SELF-LOCKING .....	EA	4
15	20	XDFZZ		A1-11232C	14850	PIN, GUIDE .....	EA	2
15	21	PAFZZ	5305-00-989-7434	MS35207-263	96906	SCREW, MACHINE .....	EA	4
15	22	PAFZZ	5310-00-809-8546	MS27183-8	96906	WASHER, FLAT .....	EA	4
15	23	PAFZZ	5310-00-877-5797	MS21044N3	96906	NUT, SELF-LOCKING .....	EA	4
15	24	XDFFD		A1-11234C1	14850	PIN, ASSEMBLY, GUIDE .....	EA	1
15	25	PAFZZ	5315-00-844-3954	MS16562-21	96906	PIN, SPRING .....	EA	2
15	26	PAFZZ	5305-00-958-5477	MS35190-254	96906	SCREW, MACHINE .....	EA	2
15	27	PAFZZ	5310-00-809-8544	MS27183	96906	WASHER, FLAT .....	EA	2
15	28	PAFZZ	5310-00-811-3494	MS21044N08	96906	NUT, SELF-LOCKING .....	EA	2
15	29	XDFZZ		A1-11232C	14850	PIN, GUIDE .....	EA	1
15	30	XDFZZ		A1-11234-2	14850	ANGLE .....	EA	1
15	31	XDFZZ		7020	01930	LATCH SET, RIM .....	EA	1
15	32	PAFZZ	5305-00-958-5477	MS35190-254	96906	SCREW, MACHINE .....	EA	4
15	33	PAFZZ	5310-00-809-8544	MS27183-7	96906	WASHER, FLAT .....	EA	4
15	34	PAFZZ	5310-00-811-3494	MS21044N08	96906	NUT, SELF-LOCKING .....	EA	4
15	35	XDFFD		A1-11451C	14850	DOOR ASSEMBLY .....	EA	1
15	36	XDFZZ		A1-11450C	14850	DOOR ASSEMBLY .....	EA	1
15	37	PAFZZ	5305-00-989-7434	MS35207-263	96906	SCREW, MACHINE .....	EA	10
15	38	PAFZZ	5310-00-809-8546	MS27183-8	96906	WASHER, FLAT .....	EA	10
15	39	PAFZZ	5310-00-877-5797	MS21044N3	96906	NUT, SELF-LOCKING .....	EA	10
					<b>49</b>			

SECTION II

TM 11-5840-345-34P

(1) ILLUSTRATION		(2)	(3)	(4)	(5)	(6) DESCRIPTION	(7)	(8)
(a) FIG NO.	(b) ITEM NO.	SMR CODE	NATIONAL STOCK NUMBER	PART NUMBER	FSCM	USABLE ON CODE	U/M	QTY INC IN UNIT
15	40	XDFZZ		01-11194D	14850  50	SHELF .....	EA	1

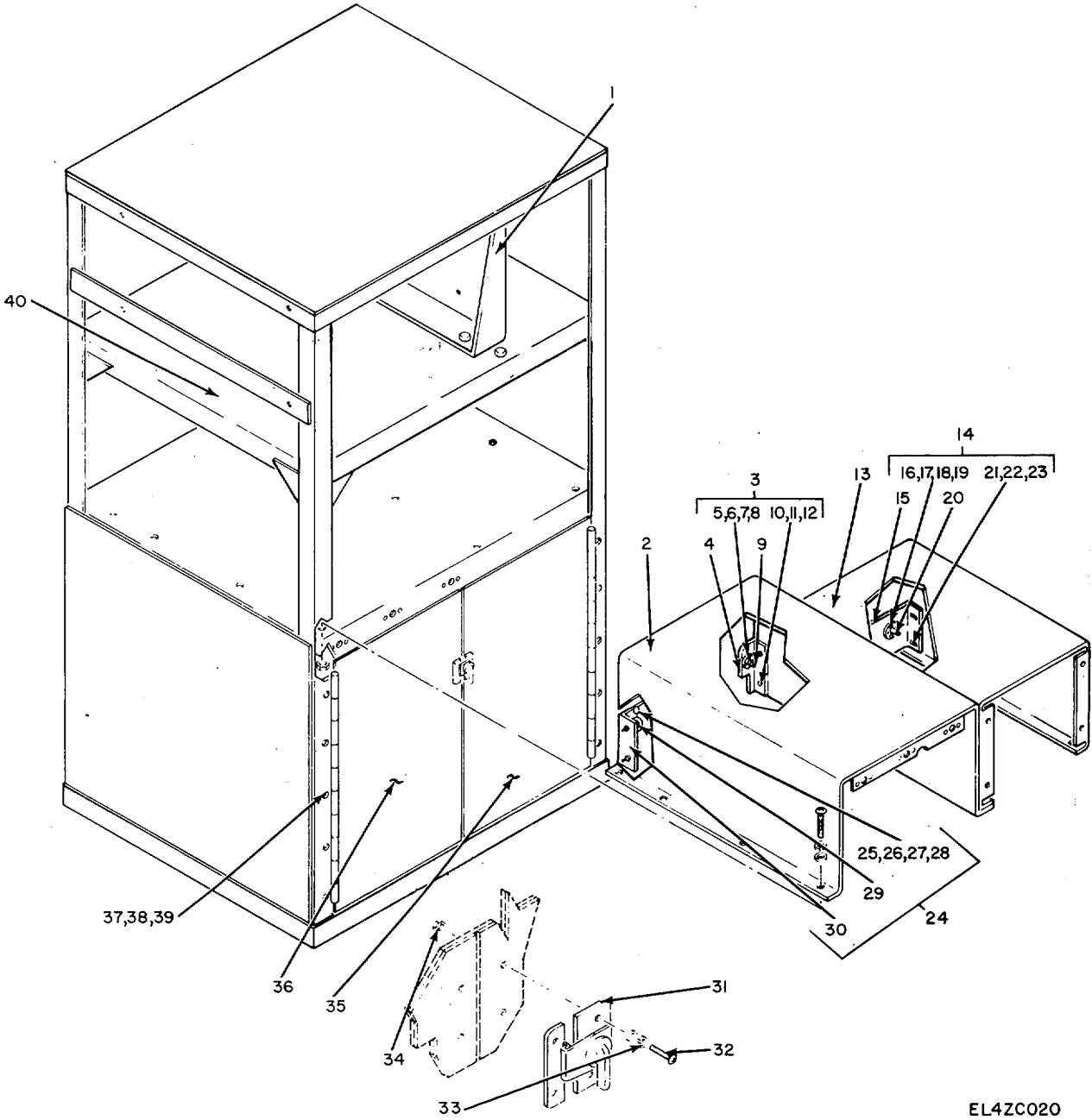


Figure 16. Rack, Electrical Equipment A1-11439D.



SECTION II

TM 11-5840-345-34P

(1) ILLUSTRATION		(2)	(3)	(4)	(5)	(6) DESCRIPTION	(7)	(8)
(a) FIG NO.	(b) ITEM NO.	SMR CODE	NATIONAL STOCK NUMBER	PART NUMBER	FSCM	USABLE ON CODE	U/M	QTY INC IN UNIT
						GROUP 23 RACK, ELECTRICAL EQUIPMENT A1-11439D		
16	1	XDFFD		A1-11415D	14850	COVER ASSEMBLY, DUST.....	EA	1
16	2	XDFFD		A1-11234C1	14850	PIN ASSEMBLY, GUIDE.....	EA	1
16	3	XDFZZ		A1-11234-2	14850	ANGLE.....	EA	1
16	4	PAFZZ	5310-00-809-8544	MS27183-7	96906	WASHER, FLAT.....	EA	2
16	5	PAFZZ	5315-00-616-4261	MS16562-28	96906	PIN, SPRING.....	EA	2
16	6	PAFZZ	5305-00-958-5477	MS35190-254	96906	SCREW, MACHINE.....	EA	2
16	7	PAFZZ	5310-00-811-3494	MS21044N08	96906	NUT, SELF-LOCKING.....	EA	2
16	8	XDFZZ		A1-1232C	14850	PIN, GUIDE.....	EA	1
16	9	PAFZZ	5305-00-989-7435	MS35207-264	96906	SCREW, MACHINE.....	EA	4
16	10	PAFZZ	5310-00-809-8546	MS27183-8	96906	WASHER, FLAT.....	EA	4
16	11	PAFZZ	5310-00-877-5797	MS21044N3	96906	NUT, SELF-LOCKING.....	EA	4
16	12	XDFFD		A1-11416D	14850	COVER ASSEMBLY, DUST.....	EA	1
16	13	XDFFD		A1-11233C	14850	PANEL ASSY, GDE, PIN.....	EA	1
16	14	XDFZZ		A1-11233C1	14850	PANEL, GUIDE PIN.....	EA	1
16	15	PAFZZ	5315-00-844-3954	MS16562-21	96906	PIN, SPRING.....	EA	4
16	16	PAFZZ	5305-00-958-5477	MS35190-254	96906	SCREW, MACHINE.....	EA	4
16	17	PAFZZ	5310-00-809-8544	MS27183-7	96906	WASHER, FLAT.....	EA	4
16	18	PAFZZ	5310-00-811-3494	MS21044N08	96906	NUT, SELF-LOCKING.....	EA	4
16	19	XDFZZ		A1-11232C	14850	PIN, GUIDE.....	EA	2
16	20	PAFZZ	5305-00-989-7434	MS35207-263	96906	SCREW, MACHINE.....	EA	4
16	21	PAFZZ	5310-00-809-8546	MS27183-8	96906	WASHER, FLAT.....	A	4
16	22	PAFZZ	5310-00-877-5797	MS21044N3	96906	NUT, SELF-LOCKING.....	EA	4
16	23	XDFFD		A1-11234C2	14850	PIN ASSEMBLY GUIDE.....	EA	1
16	24	XDFZZ		A1-11234-2	14850	ANGLE.....	EA	1
16	25	XDFZZ		A1-11232C	14850	PIN, GUIDE.....	EA	1
16	26	PAFZZ	5315-00-844-3954	MS16562-21	96906	PIN, SPRING.....	EA	2
16	27	PAFZZ	5305-00-958-5477	MS35190-254	96906	SCREW, MACHINE.....	EA	2
16	28	PAFZZ	5310-00-809-8544	MS27183-7	96906	WASHER, FLAT.....	EA	2
16	29	PAFZZ	5310-00-811-3494	MS21044N08	96906	NUT, SELF-LOCKING.....	EA	2
					<b>53</b>			

## NATIONAL STOCK NUMBER AND PART NUMBER INDEX

STOCK NUMBER	FIGURE NO.	ITEM NO.	STOCK NUMBER	FIGURE NO.	ITEM NO.
5310-00-045-3296	10	16	5935-00-243-8610	3	2
5310-00-045-3296	10	36	5935-00-243-8619	3	51
5310-00-045-3299	11	21	5935-00-243-8620	3	49
5310-00-045-4007	14	5	5935-00-243-8622	3	1
5310-00-045-4007	14	11	5935-00-243-8622	3	48
5305-00-054-5649	3	9	5305-00-253-5612	11	18
5305-00-054-5649	3	17	5935-00-256-8541	6	19
5305-00-054-5649	3	22	5935-00-256-8542	3	37
5305-00-054-5649	3	30	5935-00-256-8542	8	21
5305-00-054-5649	3	41	5935-00-256-8543	6	3
5305-00-054-6652	4	1	5935-00-256-8543	8	3
5305-00-054-6670	4	12	5935-00-260-2660	6	1
5305-00-054-6670	13	8	5305-00-269-2805	11	28
5305-00-054-6671	4	7	5305-00-269-3208	11	25
5305-00-054-6674	4	19	4210-00-270-4512	9	39
5315-00-058-9698	1	3	5935-00-280-2195	6	18
5305-00-059-4553	12	9	5935-00-280-2353	6	5
5310-00-060-2039	12	20	7110-00-281-4469	9	44
5935-00-062-1254	8	25	5120-00-293-0808	9	36
5305-00-071-2238	L3	6	6250-00-299-2884	9	6
5935-00-080-5847	3	34	6645-00-303-4950	9	31
5310-00-080-6004	11	30	5120-00-392-8361	9	28
5310-00-080-8495	9	9	5805-00-402-5274	1	24
5310-00-080-8495	9	20	5895-00-402-5301	1	22
5310-00-080-8495	9	33	5935-00-406-4218	8	28
5310-00-081-4219	1	33	5310-00-407-9566	1	34
5310-00-081-4219	11	5	5310-00-407-9566	11	6
5310-00-081-8087	10	21	4940-00-408-4953	9	18
6210-00-087-4248	12	7	6110-00-409-8125	2	5
5935-00-089-4442	3	12	5935-00-426-8406	3	5
5935-00-089-4442	3	26	5935-00-426-8406	3	13
5307-00-099-8871	14	4	5935-00-426-8406	3	19
5307-00-099-8871	14	10	5935-00-426-8406	3	27
5940-00-113-8184	12	11	5935-00-426-8406	3	38
5935-00-133-8671	6	20	5995-00-463-4064	5	4
5935-00-133-8671	6	23	5995-00-463-4068	2	4
5935-00-133-8671	6	26	5995-00-470-4337	5	8
5935-00-133-8671	6	29	5995-00-470-4344	2	6
5340-00-134-3457	10	18	5995-00-470-4345	2	3
5340-00-134-3460	9	12	5995-00-471-8725	5	1
5340-00-134-3461	9	15	5935-00-472-3576	8	10
5340-00-134-3470	14	18	5995-00-480-1290	2	9
5340-00-134-3473	13	1	5995-00-480-1291	2	10
5340-00-134-3482	14	8	5995-00-480-1292	5	6
5935-00-138-1468	8	7	5340-00-482-9503	3	7
5935-00-138-1468	8	13	5340-00-482-9503	3	15
5935-00-138-1468	8	16	5340-00-482-9503	3	21
5410-00-141-7619	1	1	5340-00-482-9503	3	29
5940-00-143-4777	8	30	5340-00-482-9503	3	40
6240-00-152-2996	9	5	4940-00-491-0503	11	23
7520-00-162-6178	9	24	5895-00-491-3496	1	15
5310-00-167-0082	14	16	5935-00-493-5827	6	7
5315-00-177-0997	9	34	5975-00-497-2203	4	16
3120-00-177-3935	14	17	5935-00-539-0364	8	27
4520-00-177-6198	9	43	5940-00-549-9242	4	21
5995-00-185-0358	5	7	4140-00-554-3915	11	24
5995-00-185-0360	2	8	5940-00-557-4344	4	17
5995-00-185-0362	2	1	6105-00-563-5517	11	33
5995-00-185-0365	2	2	5935-00-577-8646	4	8
5995-00-185-0385	5	5	5935-00-578-2742	4	6
5995-00-185-0386	2	7	5320-00-582-3304	12	14
5310-00-202-0331	14	19	5310-00-582-5677	1	42
5935-00-223-0572	3	35	5310-00-582-5677	13	4
6240-00-223-9100	12	10	5310-00-582-5965	9	22
5975-00-224-5260	1	6	5310-00-582-5965	9	32
5935-00-224-5988	6	8	5310-00-582-5965	11	11
5310-00-225-5328	1	4	5925-00-583-7941	12	3
5306-00-225-8498	11	7	5935-00-586-6920	6	12
5305-00-225-9081	1	32	4210-00-595-4085	9	38
5305-00-225-9081	11	4	5340-00-597-6696	13	7
5940-00-230-0515	12	17	5315-00-616-4261	16	5
5995-00-232-6521	5	9	5310-00-619-1148	14	7
5995-00-232-6526	5	3	5320-00-637-5422	11	39
5995-00-232-6530	5	2	5310-00-637-9541	11	26
5935-00-233-3989	6	16	5310-00-637-9541	11	29
5120-00-234-8910	9	35	5305-00-638-3293	9	26
5935-00-236-7908	3	45	5935-00-644-8597	9	1
5935-00-236-7909	3	44	5935-00-660-5454	3	33
5935-00-242-2241	3	47	6145-00-660-8054	3	43
5935-00-243-8609	3	4	6145-00-660-8054	8	26

## NATIONAL STOCK NUMBER AND PART NUMBER INDEX

STOCK NUMBER	FIGURE NO.	ITEM NO.	STOCK NUMBER	FIGURE NO.	ITEM NO.
6145-00-660-8825	3	10	5935-00-850-9157	8	15
6145-00-660-8825	3	18	5935-00-850-9157	6	18
6145-00-660-8825	3	24	5935-00-850-9157	8	24
6145-00-660-8825	3	32	5310-00-877-5797	14	6
6145-00-661-0191	6	21	5310-00-877-5797	15	12
6145-00-661-0191	6	24	5310-00-877-5797	15	23
6145-00-661-0191	6	27	5310-00-877-5797	15	39
6145-00-661-0191	6	30	5310-00-877-5797	16	11
6145-00-661-0191	8	8	5310-00-877-5797	16	22
6145-00-661-0191	8	11	5310-00-877-5798	12	22
6145-00-661-0191	8	14	5935-00-878-8174	4	9
6145-00-661-0191	8	17	5310-00-880-5977	9	10
6145-00-661-0191	8	23	5310-00-880-5978	4	13
5935-00-682-0567	8	19	5310-00-880-5978	13	9
5930-00-683-2703	9	47	5310-00-880-5978	14	12
5305-00-702-4523	1	43	5305-00-889-3000	10	19
5305-00-717-5467	1	39	5305-00-889-3002	11	41
5210-00-721-8960	9	56	5950-00-892-8208	12	24
5310-00-722-5998	4	2	5120-00-900-6096	9	40
5935-00-725-2550	8	1	5895-00-903-0649	1	19
6230-00-729-9614	9	16	5985-00-909-5350	1	17
5840-00-752-0603	1	28	6210-00-921-6682	9	4
4940-00-752-2525	1	5	6545-00-922-1200	9	23
6210-00-752-2543	9	2	5310-00-926-1835	14	20
5935-00-755-2775	4	10	5935-00-928-3127	3	6
5310-00-761-1681	9	54	5935-00-928-3127	3	14
5305-00-765-4257	13	11	5935-00-928-3127	3	20
5310-00-773-1618	1	38	5935-00-928-3127	3	28
5925-00-785-9531	12	18	5935-00-928-3127	3	39
5935-00-806-3564	6	4	5310-00-929-1807	1	40
5935-00-809-0786	6	10	5310-00-929-6395	4	3
5935-00-809-0786	6	14	5310-00-933-8119	4	14
5310-00-809-3078	9	53	5310-00-933-8119	14	13
5310-00-809-4058	9	21	5310-00-933-8121	9	11
5310-00-809-4058	9	31	5310-00-933-8121	13	5
5310-00-809-4058	11	12	5310-00-934-9759	4	11
5310-00-809-8544	10	4	5310-00-934-9761	4	4
5310-00-809-8544	11	22	5310-00-937-0453	9	49
5310-00-809-8544	12	21	5840-00-944-1203	1	8
5310-00-809-8544	15	7	5895-00-944-1319	1	12
5310-00-809-8544	15	18	5975-00-944-1499	6	2
5310-00-809-8544	15	27	5975-00-944-1499	6	6
5310-00-809-8544	15	33	5975-00-944-1499	6	9
5310-00-809-8544	16	4	5975-00-944-1499	6	15
5310-00-809-8544	16	17	5975-00-944-1499	8	2
5310-00-809-8544	16	28	5975-00-944-1499	8	5
5310-00-809-8546	9	13	5975-00-944-1499	8	20
5310-00-809-8546	10	15	5975-00-944-1499	8	29
5310-00-809-8546	10	35	5940-00-949-3125	4	20
5310-00-809-8546	12	23	5310-00-951-7209	9	50
5310-00-809-8546	15	10	5305-00-958-5477	10	3
5310-00-809-8546	15	22	5305-00-958-5477	10	23
5310-00-809-8546	15	38	5305-00-958-5477	15	6
5310-00-809-8546	16	10	5305-00-958-5477	15	17
5310-00-809-8546	16	21	5305-00-958-5477	15	26
5310-00-811-3494	10	5	5305-00-958-5477	15	32
5310-00-811-3494	10	24	5305-00-958-5477	16	6
5310-00-811-3494	15	8	5305-00-958-5477	16	16
5310-00-811-3494	15	19	5305-00-958-5477	16	27
5310-00-811-3494	15	28	5310-00-982-4999	3	8
5310-00-811-3494	15	34	5310-00-982-4999	3	16
5310-00-811-3494	16	7	5310-00-982-4999	3	23
5310-00-811-3494	16	18	5310-00-982-4999	3	31
5310-00-811-3494	16	29	5310-00-982-4999	3	42
5925-00-818-4811	12	2	5310-00-982-6814	13	10
5930-00-827-0034	9	46	5310-00-983-8483	9	27
5935-00-827-1149	8	4	5310-00-983-8483	10	20
5935-00-827-4649	4	5	5305-00-984-6192	11	20
5935-00-835-4339	6	11	5310-00-984-7042	1	37
5935-00-838-8419	3	11	5305-00-989-7434	9	14
5935-00-838-8419	3	25	5305-00-989-7434	15	21
5935-00-846-8665	6	17	5305-00-989-7434	15	37
5935-00-850-9157	6	22	5305-00-989-7434	16	20
5935-00-850-9157	6	25	5305-00-989-7435	12	25
5935-00-850-9157	6	28	5305-00-989-7435	15	11
5935-00-850-9157	6	31	5305-00-989-7435	16	9
5935-00-850-9157	8	9	5305-00-993-1848	10	14
5935-00-850-9157	8	12	5305-00-993-1848	10	34

## NATIONAL STOCK NUMBER AND PART NUMBER INDEX

PART NUMBER	FSCM	FIG. NO.	ITEM NO.	PART NUMBER	FSCM	FIG. NO.	ITEM NO.
AB-1158/GRA-119	80058	1	18	D1-11239C	14850	9	57
AN/FPN-40	24930	1	28	D1-11240C	14850	9	55
AN/MT6-9	80058	9	44	D1-113478	14850	1	2
AN960C101	88044	14	16	D9-30346	14650	12	15
AS-1796/GPA-119	80058	1	17	FS2	71183	9	6
A1-111600	14850	13	3	F20T12CW	08805	9	5
A1-111620	14850	1	31	GGGEC0930	80244	9	36
A1-11163G	14850	13	2	GGGH86	81349	9	40
A1-111660	14850	14	3	GGGL211	81349	9	56
A1-11182C	14850	14	2	GSA	80244	9	29
A1-111830	14850	9	42	GSA-F558	80244	9	23
A1-1118301	14850	10	25	GS510-286-4	24930	4	18
A1-11184D	14850	9	45	G0886	06324	3	4
A1-11184D1	14850	10	1	G0886X	06324	3	2
A1-11185D	14850	9	41	G0930P	06324	3	47
A1-11185D1	14850	10	17	G09305	06324	3	45
A1-11187C	14850	12	19	G0935	06324	3	51
A1-11189D	14850	12	4	G0935P	06324	3	49
A1-11190D	14850	12	13	G1106-40ES-72G	06324	3	44
A1-11191D	14850	1	30	G1106-51E5-84G	06324	3	1
A1-11191D1	14850	12	1	G1106-51E5-84G	06324	3	48
A1-11195D	14850	15	2	G350264S1	24930	3	5
A1-11199D	14850	15	13	G350264S1	24930	3	13
A1-11232C	14850	15	9	G350264S1	24930	3	19
A1-11232C	14850	15	20	G350264S1	24930	3	27
A1-11232C	14850	15	29	G350264S1	24930	3	38
A1-11232C	14850	16	19	J-2945/TPX-41	80058	1	15
A1-11232C	14850	16	25	J-2972/G	80058	2	5
A1-11233C	14850	15	14	KY-593/TPX-44	80058	1	8
A1-11233C	14850	16	13	KY-97C/TPX	80058	1	21
A1-11233C1	14850	15	15	MD-638/TPX-41	80058	1	19
A1-11233C1	14850	16	14	MD25042-22C	96906	3	33
A1-11234-2	14850	15	4	MD3057-16A	96906	6	5
A1-11234-2	14850	15	30	MD3106F36-10SY	96906	8	6
A1-11234-2	14850	16	3	MD3108R22-195	96906	3	34
A1-111234-2	14650	16	24	M11E468TYPE1	81349	9	39
A1-11234C1	14850	15	24	MS15795-805	96906	4	2
A1-11234C1	14850	16	2	MS15795-807	96906	13	9
A1-11234C2	14850	15	3	MS15795-807	96906	14	12
A1-11234C2	14850	16	23	MS15795-808	96906	14	7
A1-11235D	14850	9	25	MS15795-810	96906	1	42
A1-11236D	14850	9	7	MS15795-810	96906	13	4
A1-11240D	14850	1	23	MS15795-811	96906	9	10
A1-11342D	14850	1	11	MS15795-814	96906	1	38
A1-11415D	14850	16	1	MS15795-841	96906	1	4
A1-114160	14850	16	12	MS16562	96906	1	3
A1-11438D	14850	15	1	MS16562-21	96906	15	5
A1-11439D	14850	1	1	HMS6562-21	96906	15	16
A1-11450C	14850	15	36	MS16562-21	96906	15	25
A1-11451C	14850	15	35	MS16562-21	96906	16	15
A1-11542D	14850	1	13	MS16562-21	96906	16	26
A1-11543D	14850	1	14	MS16562-28	96906	16	5
A1-1232C	14850	16	8	MS17822-1-9A	96906	6	2
				MS17822-1-9A	96906	6	6
A1-14975-1	14850	1	47	MS17822-1-9A	96906	6	9
A1-14975-2	14850	1	46	MS17822-1-9A	96906	6	15
A1-14975-3	14850	1	45	MS17822-1-9A	96906	8	2
A1-14975-5	14850	1	44	MS17822-1-9A	96906	8	5
A11C	36922	9	31	MS17822-1-9A	96906	8	20
BZ2RQ18A2	91929	9	47	MS17822-1-9A	96906	8	29
C-1271A/TPX-22	60058	1	10	MS20470A3-4	96906	11	39
C-7014/TPX-44	80058	1	12	MS20600AD4W2	96906	12	14
CG3664U10FT	80058	5	8	MS21044C04	96906	3	8
CG3664U30FT	80058	5	4	MS21044C04	96906	3	16
CG3666U50FT	80058	2	10	MS21044C04	96906	3	23
CG3667U50FT	80058	2	9	MS21044C04	96906	3	31
CX12560G30FT	80058	5	6	MS21044C04	96906	3	42
CX12561G30FT	80058	5	9	MS21044C08	96906	13	10
CX12562G30FT	80058	5	1	MS21044008	96906	12	20
CX12563G30FT	80058	5	3	MS21044D3	96906	12	22
CX12564G30FT	80058	5	2	MS21044N06	96906	10	21
CX12565G50FT	80058	2	6	MS21044N08	96906	10	5
CX12566G50FT	80058	2	3	MS21044N08	96906	10	24
CX12567G10FT	80058	2	4	MS21044N08	96906	15	8
C0-02H1F2-4-1080	81349	3	46	MS21044N08	96906	15	19
C0-04h1F4-4-1325	81349	3	50	MS21044N08	96906	15	28
C0-14MGF14-16-0730	81349	3	36	MS21044N08	96906	15	34
01-111940	14850	15	40	MS21044N08	96906	16	7
01-112310	14850	9	51	MS21044N08	96906	16	18
01-11238C	14850	9	58	MS21044N08	96906	16	29

## NATIONAL STOCK NUMBER AND PART NUMBER INDEX

PART NUMBER	FSCM	FIG. NO.	ITEM NO.	PART NUMBER	FSCM	FIG. NO.	ITEM NO.
MS21044N3	96906	14	6	MS35207-263	96906	16	20
MS21044N3	96906	15	12	MS35207-264	96906	12	25
MS21044N3	96906	15	23	MS35207-264	96906	15	11
MS21044N3	96906	15	39	MS35207-264	96906	16	9
MS21044N3	96906	16	11	MS35207-265	96906	10	14
MS21044N3	96906	16	22	MS35207-265	96906	10	34
MS21318-15	96906	11	18	MS35223-30	96906	9	26
MS24641-25	96906	10	10	MS35307-306	96906	1	43
MS24641-25	96906	10	30	MS35307-362	96906	1	39
MS25036-120	96906	4	17	MS35338-136	96906	4	3
MS25036-157	96906	8	30	MS35338-137	96906	4	14
MS25043-24C	96906	4	6	MS35338-137	96906	14	13
MS25043-36C	96906	4	8	MS35338-139	96906	9	11
MS2718-8	96906	10	35	MS35338-139	96906	13	5
MS27183	96906	15	27	MS35338-14	96906	11	11
MS27183-10	96906	9	21	MS35338-141	96906	1	37
MS27183-10	96906	9	31	MS35338-145	96906	9	49
MS27183-10	96906	11	12	MS35338-41	96906	14	5
MS27183-11	96906	9	53	MS35336-41	96906	14	11
MS27183-12	96906	1	33	MS35338-42	96906	11	21
MS27183-12	96906	11	5	MS35338-43	96906	10	16
MS27183-14	96906	11	30	MS35338-43	96906	10	36
MS27183-22	96906	9	50	MS35338-44	96906	9	22
MS27183-5	96906	10	20	MS35338-44	96906	9	32
MS27183-7	96906	10	4	MS35338-45	96906	1	34
MS27183-7	96906	11	22	MS35338-45	96906	11	6
MS527183-7	96906	12	21	MS35338-46	96906	11	26
MS27183-7	96906	15	7	MS35338-46	96906	11	29
MS27183-7	96906	15	8	MS35388-139	96906	1	41
MS27183-7	96906	15	33	MS35425-39	96906	9	9
MS27183-7	96906	16	4	MS35425-39	96906	9	20
MS27183-7	96906	16	17	MS35425-39	96906	9	33
MS27183-7	96906	16	28	MS35649-264	96906	4	4
MS27183-8	96906	9	13	MS35649-284	96906	4	11
MS27183-8	96906	10	15	MS5157-15	96906	3	41
MS27183-8	96906	12	23	MS5175-807	96906	4	13
M527183-8	96906	15	10	MS51922-2	96906	1	40
MS27183-8	96906	15	22	MS51957-15	96906	3	9
MS27183-8	96906	15	38	MS51957-15	96906	3	17
MS27183-8	96906	16	10	MS51957-15	96906	3	22
MS27183-8	96906	16	21	MS51957-15	96906	3	30
MS3057-10A	96906	6	10	MS51957-28	96906	4	1
MS3057-10A	96906	6	14	MS51957-45	96906	4	12
MS3057-12A	96906	3	35	MS51957-45	96906	13	8
MS3057-6A	96906	6	18	MS551957-46	96906	4	7
MS3102R22-19S	96906	8	19	MS51957-49	96906	4	19
MS3102R24-9S	96906	4	5	MS51959-43	96906	13	11
MS3102R36-10P	96906	8	1	MS51967-4	96906	9	54
MS3102R36-10PX	96906	8	4	MS90725-13	96906	13	6
MS3102R36-SP	96906	4	10	MS90725-157	96906	9	59
MS3102R36-55	96906	4	9	MS90725-161	96906	9	60
MS3106F1457P	96906	6	19	MS90725-33	96906	11	7
MS3106F22-19P	96906	3	37	MS90725-36	96906	1	32
MS3106F22-19P	96906	8	21	MS90725-36	96906	11	4
MS3106F22-23P	96906	6	16	MS90725-46	96906	9	52
MS3106F22-9S	96906	8	28	MS90725-57	96906	11	25
MS3106F28-12P	96906	6	7	MS90726-62	96906	11	28
MS3106F36-10S	96906	6	3	MX-148/G	80058	1	6
MS3106F36-10S	96906	8	3	MX-8795/TPX-41	80058	1	22
MS3106F36-10SW	96906	6	1	MILR-46089	96906	1	48
MS3106G18-1P	96906	6	8	M39012-15-0001	81349	6	20
MS3108R14S7S	96906	6	17	M39012-15-0001	81349	6	23
MS3108R18-1S	96906	6	11	M39012-15-0001	81349	6	26
MS3108R28-12S	96906	6	4	M39012-15-0001	81349	6	29
MS35190-238	96906	12	9	M39012-25-0003	81349	3	26
MS35190-254	96906	10	3	M39012-25-003	61349	3	12
MS35190-254	96906	10	23	NE51	08805	12	10
MS35190-254	96906	15	6	00115	56365	12	2
MS35190-254	96906	15	17	00120	56365	12	3
MS35190-254	96906	15	26	00125	19804	12	5
MS35190-254	96906	15	32	00260	56365	12	18
MS35190-254	96906	16	6	RG214AU	80058	3	43
MS35190-254	96906	16	16	RG214AU	80058	8	26
MS35190-254	96906	16	27	RG216U	81349	3	10
MS35206-230	96906	10	19	RG216U	81349	3	18
MS35206-242	96906	11	41	RG216U	81349	3	24
MS35206-244	96906	11	20	RG216U	81349	3	32
MS35207-263	96906	9	14	RG598U	80058	6	21
MS35207-263	96906	15	21	RG598U	80058	6	24
M535207-263	96906	15	31	RG598U	80058	6	27

## NATIONAL STOCK NUMBER AND PART NUMBER INDEX

PART NUMBER	FSCM	FIG. NO.	ITEM NO.	PART NUMBER	FSCM	FIT. NO.	ITEM NO.
RG598U	80058	6	30	SMC374284-5	80063	12	12
RG59BU	80058	8	8	SM27183-5	96906	9	27
RG59BU	80058	8	11	SS37B370	51581	1	36
RG59BU	80058	8	14	TA553TSS12	84971	3	7
RG598U	80058	8	17	TA553TSS12	84971	3	15
RG59BU	60058	8	23	TA553TSSI2	84971	3	21
RT-2640/UPX-6	60058	1	25	TA553TSSI2	84971	3	29
S-70/U	80058	1	1	TA553TSSI2	84971	3	40
SA9885	81831	14	1	TD-991/G	24930	1	9
SCB339866	80063	11	1	TD-992/G	24930	1	24
SCB539420	80063	9	30	TS15	71218	9	3
SCB539429	80063	9	18	UG1185BU	80058	3	6
SCB539432	80063	9	19	UG1185BU	80058	3	14
SCB539465	80063	9	12	UG1185BU	80058	3	20
SCB539466	80063	9	4	UG1185BU	80058	3	28
SC8539412	80063	9	28	UG1185BU	80058	3	39
SCB539490	80063	9	34	UG1213U	80058	8	27
SCB53S527	80063	10	11	UG160FU	80058	8	25
SCB539527	80063	10	31	UG260FU	80058	6	22
SCB539589	80063	14	4	UG260FU	80058	6	25
SC8539589	80063	14	10	UG260FU	80058	6	28
SCB539595	80063	14	17	UG260FU	80058	6	31
SCB5395S6	80063	14	19	UG260FU	80058	8	9
SCB539597	80063	14	8	UG260FU	80058	8	12
SCB539619	80063	11	38	UG260FU	8C058	8	15
SCB53581	80063	11	43	UG260FU	80058	8	18
SCB539892	80063	11	31	UG260FU	80058	8	24
SCB539979	80063	11	17	UG573AU	80058	3	11
SCB577936	80063	13	1	UG573AU	80058	3	25
SCB577975	80063	10	7	10-107618-8S	77820	6	12
SCB577975	80063	10	28	10-113138-18	77820	6	13
SCB577993	80063	10	13	1201	74545	9	46
SCB577993	80063	10	33	170102	24930	1	20
SCB681108	80063	11	32	170106	24930	1	21
SCC539428	80063	9	17	170160	24930	5	7
SCC535463	80063	9	8	170161	24930	5	5
SCC539503	80063	9	24	170165	24930	2	7
SCC539594	80063	14	18	170166	24930	2	8
SCC539613-2	80063	11	24	170176	24930	2	1
SCC539614	80063	11	23	170177	24930	2	2
SCC539617	80063	11	40	170179	24930	7	9
SCC539703	80063	14	15	170180	24930	7	10
SCC5398391	80063	11	35	170181	24930	7	4
SCC539839-2	80063	11	37	170182	24930	7	8
SCC539839-3	80063	11	36	170183	24930	7	5
SCC539839GP11	80063	11	34	170184	24930	7	7
SCC539966	80063	11	3	170185	24930	7	2
SCC513976	80063	10	27	170186	24930	7	6
SCC537977	80063	10	6	170186	24930	7	1
SCC577977	80063	10	26	170188	24930	7	3
SCC577977-1	80063	10	9	181502-1	24930	1	26
SCC577977-1	80063	10	29	182447	24930	4	16
SCC5779976	80063	10	8	182448-1	24930	4	15
SCC589460	80063	9	38	19516	71468	6	7
SCC539464	80063	9	15	19516	71468	8	13
SCD539612	80063	11	27	19516	71468	8	16
SCD539615	80063	11	33	19517	91737	8	10
SCD539618	80063	11	42	2106-7	32572	9	16
SCD539702	80063	14	9	30T118	93993	12	24
SCD539708	80063	1	29	300989	32195	9	35
SCD539708-5	80063	14	14	31892	00779	12	11
SCD539899	80063	11	19	31904	00779	12	17
SCD539899-1	80063	11	44	322894	00779	4	21
SCD539S67	80063	11	2	356-31-04-051	71785	4	20
SCD539978	80063	11	10	36N	14557	10	18
SCD539980	80063	11	15	37-0408-0331-245	72619	12	7
SCD539981	80063	11	8	5220	81860	13	7
SCD539982	80063	1	16	5273L	81349	9	43
SCD539982-1	80063	11	14	666147-691	14100	1	5
SCD539982-10	80063	11	16	7020	01930	10	2
SCD539982-8	80063	11	9	7020	01930	10	22
SCD539982-9	80063	11	13	7020	01930	15	31
SCD547290	80063	12	16	70766	24930	3	3
SKTAD107	14850	9	48	79NTM02	72962	14	20
SMB471506	80063	10	12	825-0115	08621	9	2
SMB471506	80063	10	32	8514	91737	8	22
SMC374203	80063	12	8	9200	74545	9	1
SMC374284	80063	12	6				

**NATIONAL STOCK NUMBER AND PART NUMBER INDEX**  
**LATEST NATIONAL STOCK NUMBER ASSIGNMENTS**

<b>STOCK NUMBER</b>	<b>FIGURE NO.</b>	<b>ITEM NO.</b>	<b>STOCK NUMBER</b>	<b>FIGURE NO.</b>	<b>ITEM NO.</b>
4935-00-037-5118	11	35	5305-00-724-5909	9	60
5305-00-056-9945	10	10	5935-00-826-8548	6	13
5305-00-056-9945	10	30	5315-00-844-3954	15	5
5305-00-225-8510	9	52	5315-00-844-3954	15	16
5840-00-406-3438	1	9	5315-00-844-3954	15	25
5985-00-413-4415	1	18	5315-00-844-3954	16	15
5925-00-544-3741	12	5	5315-00-844-3954	16	26
5895-00-629-9483	1	21	5310-00-933-8121	1	41
5305-00-724-5907	9	59			

**LATEST NATIONAL STOCK NUMBER ASSIGNMENTS**

<b>PART NUMBER</b>	<b>FSCM</b>	<b>FIG. NO.</b>	<b>ITEM NO.</b>	<b>PART NUMBER</b>	<b>FSCM</b>	<b>FIG. NO.</b>	<b>ITEM NO.</b>
A1-14975-4	14850	1	35				
MS24621-18	96906	10	30	MS3057-16A	96906	6	5
MS24621-18	96906	10	10	MS3106F36-10SY	96906	8	6
MS25042-22C	96906	3	33	MS3108R22-19S	96906	3	34
MS27183-5	96906	9	27	MS35338-139	96906	1	41

\*U. S. GOVERNMENT PRINTING OFFICE: 1978-603-028/695

By Order of the Secretary of the Army:

**BERNARD W. ROGERS**  
*General, United States Army*  
*Chief of Staff*

Official:

**J. C. PENNINGTON**  
*Brigadier General, United States Army*  
*The Adjutant General*

Distribution:

Active Army:

TSG (1)  
USAAREND (1)  
USAINSCOM (2)  
TRADOC (2)  
DARCOM (1)  
TECOM (2)  
OS Maj Comd (2)  
USACC (2)  
HISA (Ft Monmouth) (26)  
Armies (1)  
USASIGS (10)  
Svc Colleges (1)  
USAERDAA (1)  
USAERDAW (1)  
USA Dep (1)  
Sig Sec USA Dep (1)

Fort Carson (5)  
Fort Gillem (10)  
Fort Huachuca (5)  
Ft Richardson (CERCOM Ofc) (1)  
WSMR (1)  
Army Dep (1) except  
LBAD (10)  
SAAD (30)  
TOAD (14)  
SHAD (3)  
Units ord under fol TOE:  
29-134 (1)  
29-136 (1)  
29-207 (2)  
29-610 (2)

NG: None

USAR: None

For explanation of abbreviations used see, AR310-50.



RECOMMENDED CHANGES TO EQUIPMENT TECHNICAL PUBLICATIONS



THEN... JOT DOWN THE DOPE ABOUT IT ON THIS FORM, CAREFULLY TEAR IT OUT, FOLD IT AND DROP IT IN THE MAIL!

**SOMETHING WRONG WITH THIS PUBLICATION?**

FROM: (PRINT YOUR UNIT'S COMPLETE ADDRESS)

DATE SENT

PUBLICATION NUMBER

PUBLICATION DATE

PUBLICATION TITLE

BE EXACT... PIN-POINT WHERE IT IS

PAGE NO.

PARA-GRAPH

FIGURE NO.

TABLE NO.

IN THIS SPACE TELL WHAT IS WRONG AND WHAT SHOULD BE DONE ABOUT IT:

TEAR ALONG PERFORATED LINE

PRINTED NAME, GRADE OR TITLE, AND TELEPHONE NUMBER

SIGN HERE:

DA FORM 2028-2  
1 JUL 79

PREVIOUS EDITIONS ARE OBSOLETE.

P.S.—IF YOUR OUTFIT WANTS TO KNOW ABOUT YOUR RECOMMENDATION MAKE A CARBON COPY OF THIS AND GIVE IT TO YOUR HEADQUARTERS.

